

# Fan Accessories

## Backdraft Damper - Spring Close



- Backdraft damper for circular ducts
- Two spring loaded blades formed from aluminum H14
- 24 GA, G90 galvanized steel casing, 3/32" diameter brass central rod, stainless steel torsion spring, EPBM synthetic rubber gasket
- Can be vertically mounted

Diameter	Length	Brand	Part Number
4"	3 3/4"	Fantech	<b>RSK4</b>
5"	3 1/8"	Fantech	<b>RSK5</b>
6"	3 1/8"	Fantech	<b>RSK6</b>
8"	3 1/8"	Fantech	<b>RSK8</b>
10"	3"	Fantech	<b>RSK10</b>
12"	3"	Fantech	<b>RSK12</b>

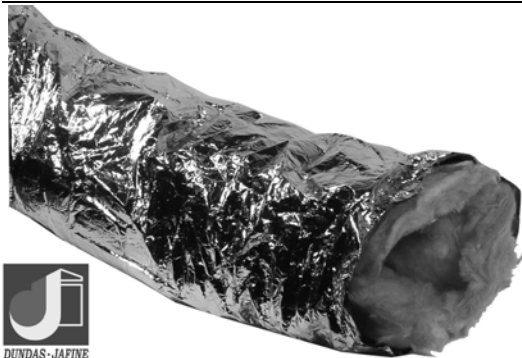
## Flexible Ducting - Insulated Black Jacket



- Polyester Core
- Black Polyethylene Jacket
- R4.2 Insulation thermal valve
- cUL 181, Class 1 Air Duct

Description	Brand	Part Number
4" x 25' Residential Type Insulated Ducting	Dundas Jafine	<b>XPC425</b>
5" x 25' Residential Type Insulated Ducting	Dundas Jafine	<b>XPC525</b>
6" x 25' Residential Type Insulated Ducting	Dundas Jafine	<b>XPC625</b>
8" x 25' Residential Type Insulated Ducting	Dundas Jafine	<b>XPC825</b>

## Flexible Ducting - Insulated Silver Jacket



- Polyester Core
- Silver Jacket with Reinforced Scrim
- R4.2 Insulation thermal valve
- cUL 181, Class 1 Air Duct

Description	Brand	Part Number
4" x 25' Insulated Ducting	Dundas Jafine	<b>SPC425</b>
5" x 25' Insulated Ducting	Dundas Jafine	<b>SPC525</b>
6" x 25' Insulated Ducting	Dundas Jafine	<b>SPC625</b>

## Flexible Ducting - Two Ply Grey Vinyl



- Made with fire resistant material & corrosion resistant wire to withstand continuous 180F operation
- Excellent for exhausting clothes dryers and bathroom fans as well as on furnace mounted humidifier units

Description	Brand	Part Number
4" x 25' Grey Vinyl Ducting	Dundas Jafine	<b>GFD425</b>
5" x 25' Grey Vinyl Ducting	Dundas Jafine	<b>GFD525</b>
6" x 25' Grey Vinyl Ducting	Dundas Jafine	<b>GFD625</b>

# Fan Accessories

## AeroGrille® Ventilation Grilles



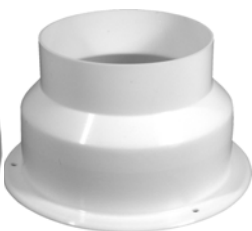
- Aerodynamic styling
- Grille is easily removed for cleaning
- Designed for use with AXC in-line duct fans or EXT external mount fans
- Steel mounting collar, integral backdraft damper
- Suitable for use over a tub or shower

Description	Brand	Part Number
6" Duct, Collar, Damper	Aeroflo	AG150-CD

## Grilles and Collars



Whisper Grill



Mounting Collar



Description	Brand	Part Number
4" Adjust-A-Vent Whisper Grille	Primex	WG401
5" Adjust-A-Vent Whisper Grille	Primex	WG501
6" Adjust-A-Vent Whisper Grille	Primex	WG601
8" Adjust-A-Vent Whisper Grille	Primex	WG801
4"/5" Plastic Mounting Collar	Fantech	410774
5"/6" Plastic Mounting Collar	Fantech	410773

## Sheet Metal Adapters



- "Y" adapter for circular duct
- Constructed of galvanized sheet metal

Description	Brand	Part Number
4" x 4" x 4" Y Connection	Fantech	FY4
5" x 5" x 5" Y Connection	Fantech	FY5



## Squeeze Elbow



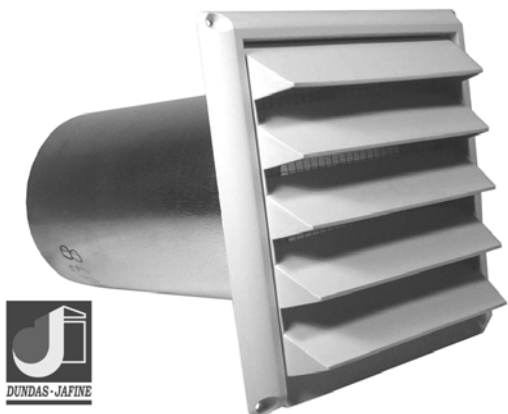
- Quick rough-in
- Easy installation
- Connect to the 4" duct pipe which is installed inside wall

Description	Brand	Part Number
4" x 90° Plastic stack hood elbow	Primex	EB4X90



# Fan Accessories

## Fresh Air Intakes with Molded Screen



- Allow fresh air to enter the home
- Come complete with a 1/4" galvanized screen to keep unwanted pests out
- Ideal for make-up air for fireplaces, high efficiency furnaces & HRV applications

Description	Brand	Part Number
4" White Air Intake with Molded Screen	Dundas Jafine	INT4Z
5" White Air Intake with Molded Screen	Dundas Jafine	INT5X
6" White Air Intake with Molded Screen	Dundas Jafine	INT6X



## Vent Hoods - Louvered Style



- Ideal for exhausting clothes dryers and exhaust fans
- 5" & 6" hoods ideal for HRV and commercial applications

Description	Brand	Part Number
4" White Vent Hood	Dundas Jafine	LPVB4Z
5" White Vent Hood with Molded Screen	Dundas Jafine	LPVB5E
6" White Vent Hood with Molded Screen	Dundas Jafine	LPVB6E



## Vent Hood - HRV Vent Hood Kit



- Low profile 2 in 1 ventilation hood
- Single port 7 1/16" x 8 1/16" to exterior wall
- Insulated transition duct connections (R 4, 0/UL 94 Rated)
- Simple & easy to install
- Oval 6" diameter connections
- Design for optimum airflow & minimum cross-contamination
- Residential or condo applications
- Durable powder coated white galvanize metal
- Screen design prevents birds & rodents from entering
- 100% UV Resistant
- Maximum efficiency

Description	Brand	Part Number
Includes 2 insulated transitions, 1 vent cap, 1 face plate, 1 connector plate, 2 tie wraps, 8 #10 x 5/8" screws, 3 #10 x 2" screws, 1 screen mesh, 4 vinyl panel retainers	Fantech	413640

