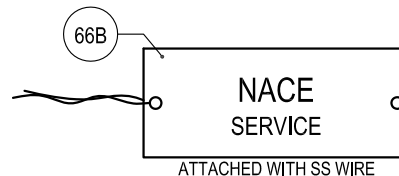
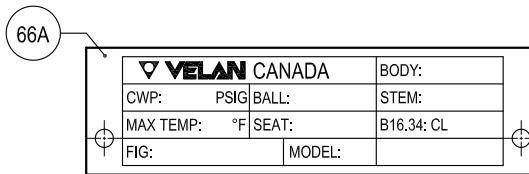


NPS	REF. NO.	A	B	C	D	ØE	ØF	G	ØH	J	K	L	Cv	WT LB	ACTUATOR
8	9999-324	28.88	32.88	8.78	19.75	8.00	15.00	8.62	20.00	4.50	15.00	9.81	9800	905	GO-4
10	9610-047	29.75	35.75	11.19	22.38	10.00	17.50	11.50	20.00	4.50	15.00	9.81	16400	1062	GO-4
12	9999-244	33.56	39.56	12.75	25.50	12.00	20.50	13.31	24.00	4.62	21.82	16.14	23800	1450	DT36
DN													Kv	Kg	
200	9999-324	733.55	835.15	223.0	501.7	203.2	381.0	218.9	508.0	114.3	381.0	249.2	8359	411	GO-4
250	9610-047	755.65	908.05	284.2	568.5	254.0	444.5	292.1	508.0	114.3	381.0	249.2	13989	482	GO-4
300	9999-244	852.42	1004.82	323.9	647.7	304.8	520.7	338.1	609.6	117.3	554.2	410.0	20301	658	DT36

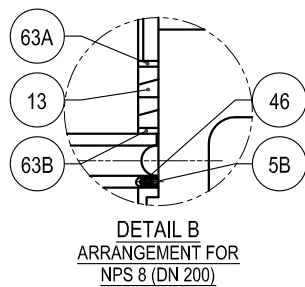
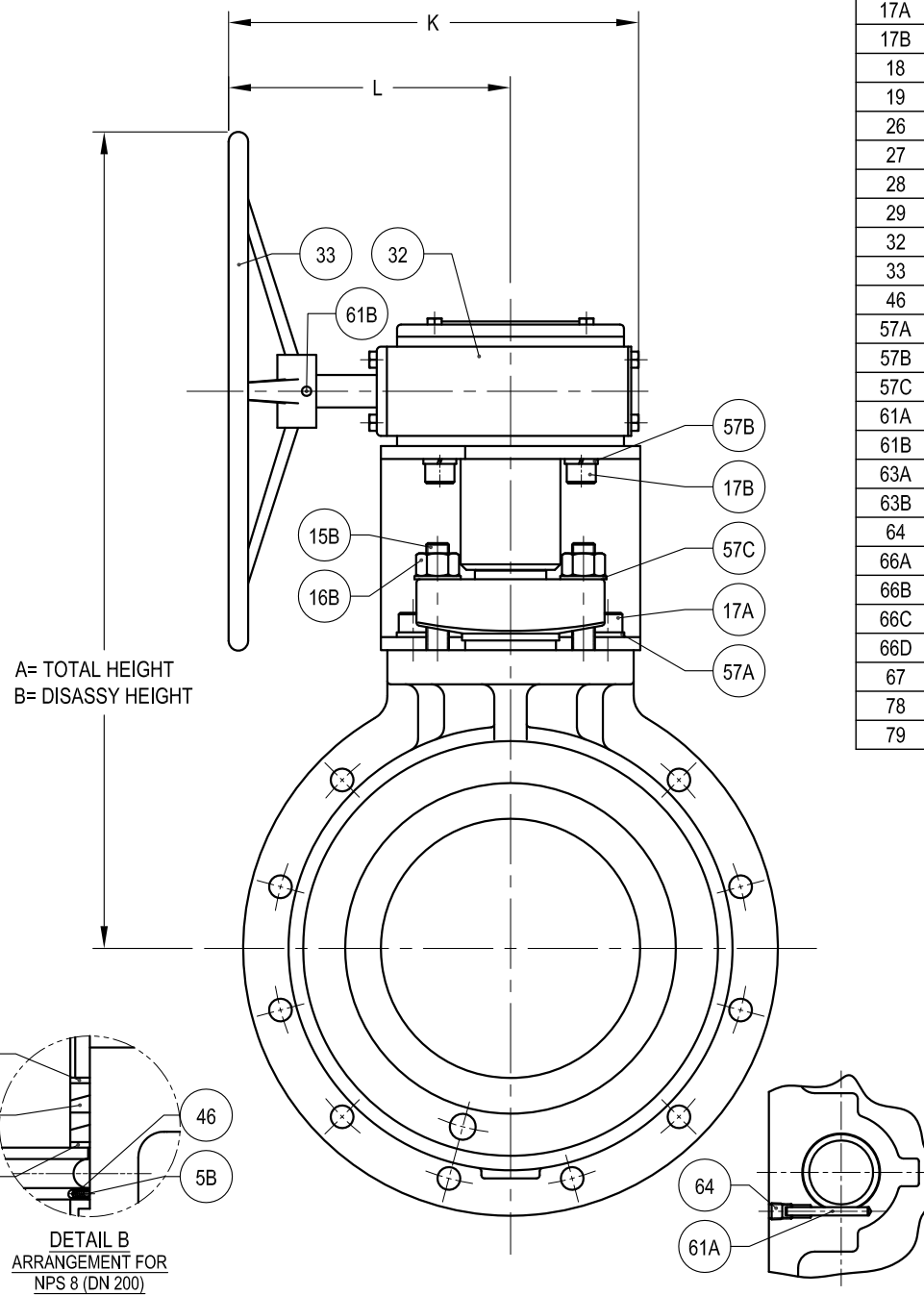
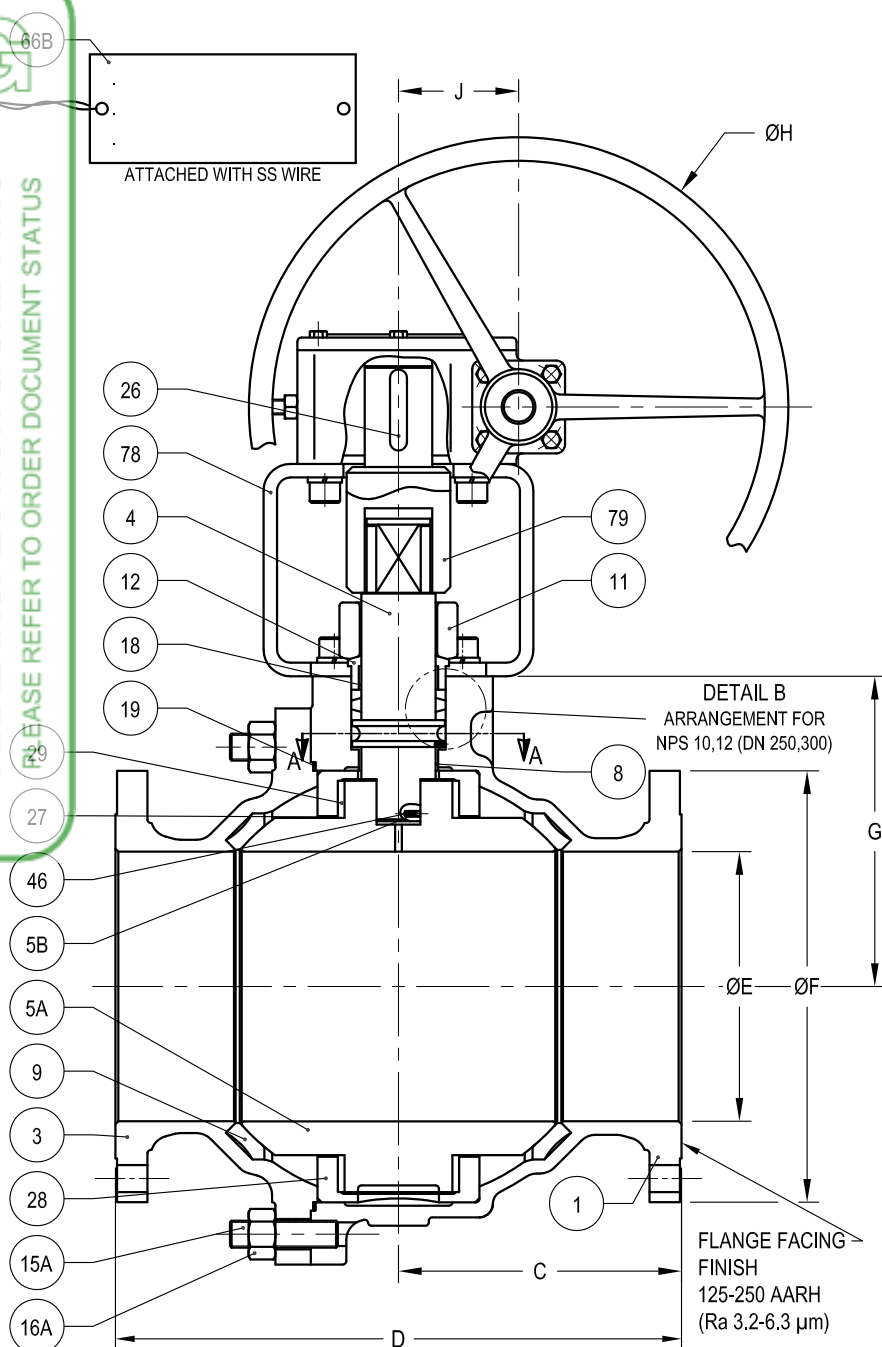
NOTES:

- 1) VALVES DESIGN IN ACCORDANCE WITH ASME B16.34
- 2) VALVES DESIGN IN ACCORDANCE WITH ASME BS 5351 (EXCEPT FOR ACTUATOR ATTACHMENT FLANGES)
- 3) TO BE IN ACCORDANCE WITH API 608, NPS 8-10 (DN 200-250) USE GEAR ACTUATOR DYNATORQUE DT36 HWHEEL Ø24", NPS 12 (DN 300) USE GEAR ACTUATOR DYNATORQUE DT36 HWHEEL Ø30", DIMENSIONS AND MATERIAL WILL VARIES (MFG. OPTION)
- 4) COMPATIBILITY TO NACE MR0175-2003/ISO 15156 IS SUBJECT TO THE CLIENT'S VERIFICATION OF H2S PARTIAL PRESSURE, CHLORIDE CONTENT, ABSENCE OF ELEMENTAL SULPHUR AND OPERATING TEMPRATURE/PRESSURE.
- 5) THE "CE" MARK SHALL BE AFFIXED TO THE VALVE FOR THE COUNTRY WHERE APPLICABLE



MATERIAL LIST					(02-SS_I-G)
PART	DESCRIPTION	QTY	MATERIAL	MATL. SPEC.	REMARKS
1	BODY	1	WCB	ASTM A216	
3	BODY END	1	WCB	ASTM A216	
4	STEM	1	316 COND. A	ASTM A276	22 HRC MAX.
5A	BALL (22 HRC MAX.)	1	CF8M	ASTM A351	ALT. 316 COND. A ASTM A276
5B	GROUNDING BALL	2	316	ASTM A276	
8	THRUST BUSHING	1	PPS	BG-1326	
9C	SEAT _(C)	2	C-RPTFE	COMMERCIAL	MATERIAL AS PER ORDER
9E	SEAT _(E)	2	MPTFE	COMMERCIAL	
9G	SEAT _(G)	2	RPTFE	COMMERCIAL	
9T	SEAT _(T)	2	PTFE	COMMERCIAL	
11	PACKING FLANGE	1	WCB	ASTM A216	ALT. CS ASTM A105
12	GLAND BUSHING	1	304	ASTM A276	ALT. CF8 ASTM A351
13	PACKING RING	3	PTFE	COMMERCIAL	NPS 8 (DN 200) QTY 4
15A	BODY STUD	-	GR B7M	ASTM A193	22 HRC MAX.
15B	GLAND STUD	2	GR B7 or B7M	ASTM A193	MFG. OPTION
16A	BODY STUD NUT	-	GR 2HM	ASTM A194	22 HRC MAX.
16B	GLAND STUD NUT	2	GR 2H or 2HM	ASTM A194	MFG. OPTION
17A	HEX SOCKET HEAD CAP SCREW	4	ALLOY STEEL	ASTM A574	
17B	HEX SOCKET HEAD CAP SCREW	4	ALLOY STEEL	ASTM A574	
18	GLAND BUSHING SLEEVE	1	RPTFE	COMMERCIAL	
19	BODY SEAL	1	316L or 347/GRAPHITE	SPIRAL WOUND	
26	KEY	1	CS SAE 1045	ASTM A29	
27	BALL WASHER	2	RPTFE	COMMERCIAL	
28	TRUNNION BRG RETAINER	2	GR 60-70	ASTM A515	or WCB ASTM A216
29	TRUNNION BEARING	2	EPOXY / PTFE	COMMERCIAL	
32	GEAR ACTUATOR	1	DUCTILE IRON	ASTM A536	NOTE 3
33	HANDWHEEL	1	CS GR 1018-1020	ASTM A108/A513	or MALL. IRON ASTM A47
46	SPRING	2	302	ASTM A313	
57A	LOCK WASHER	4	SPRING STEEL	COMMERCIAL	
57B	LOCK WASHER	4	SPRING STEEL	COMMERCIAL	
57C	WASHER	2	CS (PLATED)	COMMERCIAL	NPS 12 (DN 300) ONLY
61A	DOWEL PIN	1	316	ASTM A276	
61B	SPRING PIN	1	302	ASTM A313	
63A	PACKING WASHER	1	316	ASTM A276	UPPER NPS 8 (DN 200) ONLY
63B	PACKING WASHER	1	PPS	BG-1326	LOWER NPS 8 (DN 200) ONLY
64	NPT PLUG	1	F316	ASTM A182	
66A	NAME PLATE	1	302-304	ASTM A240	ALT. SPOTWELDED
66B	TAG PLATE	1	302-304	ASTM A240	OPTIONAL
66C	NACE TAG PLATE	1	302-304	ASTM A240	ALT. PAPER
66D	CE NAME PLATE	1	302-304	ASTM A240	
67	RIVET	2	302-304	ASTM A493	
78	BRACKET	1	CS	ASTM A36	
79	DRIVER	1	CS 1045	ASTM A108	

VELAN GENERIC PROJECT DRAWING
 RELEASED FOR MANUFACTURING,
 FINAL INSPECTION & SHIPPING
 PLEASE REFER TO ORDER DOCUMENT STATUS



REV	DESCRIPTION	DATE	DWN	APVD	IR CERT
VELAN ORDER NO: CUSTOMER: ORDER NO: PROJECT: JOB NO:					
			DRAWN : C.A. 05-08-22 APVD : J.R. 12-07-09 IND REV CERTIFIED : J.D. 12-07-09 DWG NO: 6F-11402-SS_I-09 SHEET 1 OF 1 REV. B DATE: 12-07-09		
NPS 8-12 / DN 200-300 CAST STEEL BALL VALVES SPLIT BODY - FULL PORT - BS 5351 - DD STEM FLANGED ENDS - W/ GEAR ACTUATOR CLASS 300 / PN 50					