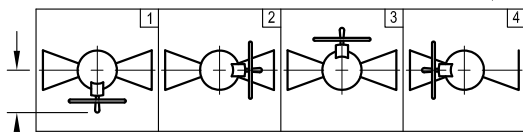


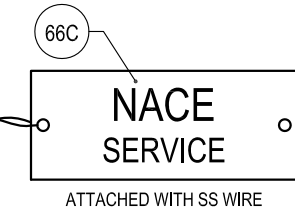
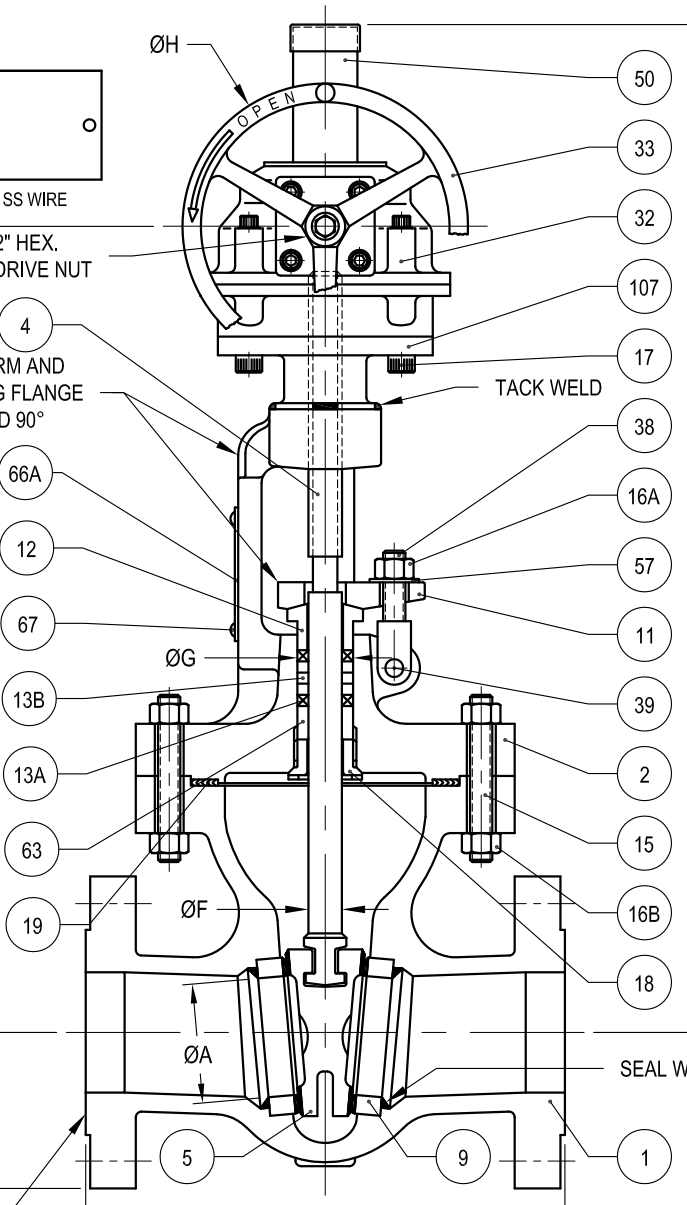
NPS	REF. NO.	ØA	FF	C	D	E	ØF	ØG	ØH	J	Cv	WEIGHT Lb			
												ACTUATOR	VALVE	TOTAL	
4	9921-001	4.00	17.00	23.52	32.52	37.21	1.12	1.75	12	5.37	1150	49	275	324	
6	9930-001	6.00	22.00	31.52	40.64	45.89	1.50	2.25	12	7.00	2650	49	540	589	
8	9939-000	8.00	26.00	36.77	45.89	51.33	1.62	2.37	12	8.25	4850	49	884	933	
10	9948-000	10.00	31.00	40.46	53.58	59.40	1.87	2.62	24	10.00	7750	49	1405	1454	
12	9957-000	12.00	33.00	49.79	64.79	70.79	2.00	2.87	18	11.00	11500	84	1812	1896	
DN												Kv	WEIGHT Kg		
100	9921-001	101.6	431.8	597	826	945	28.4	44.5	305	136.4	978	22	125	147	
150	9930-001	152.4	558.8	801	1032	1166	38.1	57.2	305	177.8	2253	22	245	267	
200	9939-000	203.2	660.4	934	1166	1304	41.1	60.2	305	209.6	4123	22	401	424	
250	9948-000	254.0	787.4	1028	1361	1509	47.5	66.5	610	254.0	6588	22	638	660	
300	9957-000	304.8	838.2	1265	1646	1798	50.8	72.9	457	279.4	9775	38	823	861	

TOP VIEW SHOWING POSSIBLE ORIENTATION OF ACTUATOR (DEFAULT = 1)



12.94" (329) FOR NPS 4 TO 10 (DN 100-250)
14.62" (371) FOR NPS 12 (DN 300)

VELAN GENERIC PROJECT DRAWING
 RELEASED FOR MANUFACTURING,
 FINAL INSPECTION & SHIPPING
 PLEASE REFER TO ORDER DOCUMENT STATUS



D=TOTAL HGT
E=DISM. HGT

FLANGE FACING FINISH
125-250 AARH
(Ra 3.2-6.3 µm)

FACE TO FACE=FF
±1/16 FOR NPS 4-10 (±1,6 FOR DN 100-250)
±1/8 FOR NPS 12 (±3,2 FOR DN 300)

PART	DESCRIPTION	QTY	MATERIAL LIST		(02NB-600) REMARKS
			MATERIAL	MATL. SPEC.	
1	BODY	1	WCB	ASTM A216	
2	BONNET	1	WCB	ASTM A216	
4	STEM	1	316	ASTM A479	22 HRC MAX.
5	WEDGE (22 HRC MAX.)	1	CF8M	ASTM A351	
			WCB	ASTM A216	316 FACE
9	SEAT	2	CS / GR B	ASTM A105/A106	CoCr FACE
11	PACKING FLANGE	1	CS	ASTM A105	
12	GLAND BUSHING	1	CS	ASTM A108	
13A	PACKING RING	2	BRAIDED GRAPHITE		
13B	PACKING RING	3	DIE-FORMED FLEXIBLE GRAPHITE		
15	BODY/BONNET STUD	-	GR B7M	ASTM A193	22 HRC MAX.
16A	GLAND NUT	2	GR 2H	ASTM A194	
16B	BODY/BONNET NUT	-	GR 2HM	ASTM A194	22 HRC MAX.
17	ALLEN SOC HD SCR	4	ALLOY STEEL	ASTM A574	ALT. STUD / NUT
18	BACKSEAT	1	316	ASTM A479	22 HRC MAX.
19	GASKET	1	316L or 347/GRAPHITE	SPIRAL WOUND	
32	BEVEL GEAR ACTUATOR	1	DUCTILE IRON	ASTM A536	NOTE 2
33	HANDWHEEL	1	DUCTILE IRON	ASTM A536	
38	GLAND EYEBOLT	2	GR B	ASTM A307	
39	GROOVE PIN	2	CS	ASTM A108	
50	STEM COVER	1	CS	ASTM A106	PLASTIC CAP
57	WASHER	2	CS	SAE TYPE	
63	PACKING SPACER	1	CS	ASTM A108	
66A	NAME PLATE	1	302-304	ASTM A240	
66B	TAG PLATE	1	302-304	ASTM A240	OPTIONAL
66C	SERVICE TAG	1	302-304	ASTM A240	ALT. PAPER
66D	CE NAME PLATE	1	302-304	ASTM A240	
67	RIVET	2	302-304	ASTM A493	ALT. SPOTWELDED
107	MOUNTING FLANGE	1	CS	ASTM A108	ALT. CS / A36

- NOTES:
- 1) VALVES DESIGN IN ACCORDANCE WITH ASME B16.34, ISO 10434 AND API 600.
 - 2) NPS 4-10 (DN 100-250) VELAN MODEL VT-20 OR VT-20E NPS 12 (DN 300) VELAN MODEL VT-30 OR VT-30E.
 - 3) COMPATIBILITY TO NACE MR0175-2003/ISO 15156 IS SUBJECT TO THE CLIENT'S VERIFICATION OF H2S PARTIAL PRESSURE, CHLORIDE CONTENT, ABSENCE OF ELEMENTAL SULPHUR AND OPERATING TEMPERATURE/PRESSURE.
 - 4) THE "CE" MARK SHALL BE AFFIXED TO THE VALVE FOR THE COUNTRY WHERE APPLICABLE

REV	DESCRIPTION	DATE	DWN	APVD	IR CERT
VELAN ORDER NO: .					
CUSTOMER:			ORDER NO:		
PROJECT:			JOB NO:		
 NPS 4-12 / DN 100-300 (FLANGED ENDS) CAST STEEL GATE VALVES WITH GEAR ACTUATOR CLASS 600 / PN 110		DRAWN :	Y.A.	93-09-20	
		APVD :	J.R.	13-07-19	
		IND REV CERTIFIED :	J.D.	13-07-19	
		DWG NO: 4F-2064C-02NB-02		SHEET 1 OF 1	
		REV. P	DATE:	13-07-19	