

**CMP**   
PLUMBING PRODUCTS



**PRODUCT  
CATALOG**

  
**Legend**<sup>™</sup>  
Roofing Products



# INDEX PAGE:

## PLUMBING PRODUCTS:

Wire Solder	Page 1 & 2
Bar Solder and Solder Paste	Page 3
Silver Brazing Alloys	Page 4
Soldering Accessories	Page 5 & 6
Lead Waste Connections	Page 7

## WATERWORKS PRODUCTS:

Magnesium Packaged Anodes	Page 8
Zinc Packaged Anodes and Tracer Wire	Page 9
Zinc Collar and Zinc Nut Anodes	Page 10

## ROOFING PRODUCTS:

Rubber Flashings	Page 11 & 12
Thermoplastic Flashings and Zinc Strip	Page 13
Lead Flat Flashings	Page 14
Pitched Lead Flashings	Page 15 & 16
Lead Flexible and Retro Flashings and Lead Caps	Page 17
Aluminum Stack Flashings	Page 18
Aluminum High Dome and Galvanized Boot Flashings	Page 19
Galvanized Venting Products	Page 20 & 21
Sheet Lead	Page 22



---

# CMP PLUMBING PRODUCTS

---

For over 125 years CMP Plumbing Products has been the choice of the professional plumber who demands only the highest quality. From our early beginnings of producing solder and lead products for the plumbing industry to a full range of plumbing accessories, roofing products and anodes for Cathodic Protection of underground pipe in the Waterworks Industry.



# WIRE SOLDER: LEAD FREE SOLDERS

All CMP Solders are manufactured to meet or exceed ASTM B32 specifications and offer the professional the highest quality solders on the market.



## SIL-PURE®

**95% Tin, 4.5% Copper, 0.5% Silver**

**Premium Lead Free Sil-Pure®** was developed to meet market demands for a safe and easy to use solder for drinking water systems and other applications. While decreasing corrosion, silver gives the solder increased flow rate and durability. **Premium Lead Free Sil-Pure®** is a lead-free and antimony-free, non-toxic solder which contains the same safe metals used in dental fillings. It offers a low melting point and wide melting range for excellent flow and control.

- **Weight: 1lb/454g, 5lbs/2.27kg, 20lbs/9.08kg spool**
- **Melting Point: Solidus: 440°F(225°C) Liquidus: 660°F (349°C)**

DESCRIPTION	CODE	CASE/QTY
Sil-Pure® Premium Lead-Free Solder, 3mm (1/8")	WSPSP12501	50
Sil-Pure® Premium Lead-Free Solder, 3mm (1/8")	WSPSP12505	4
Sil-Pure® Premium Lead-Free Solder, 3mm (1/8")	WSPSP12520	1



## NEV'R LEAK

**97% Tin, 3% Copper**

No Lead! No Antimony! Safe for potable water applications. **Superior Lead Free Nev'r Leak** is an economical Lead Free solder that flows better than the traditional 95/5, thus easier to use, which saves you time and money. **Superior Lead Free Nev'r Leak** is 97% Tin and 3% Copper and is proven to be a strong and reliable solder for all your potable water needs. It has been used in the plumbing industry for many years all over North America.

- **Weight: 1lb/454g, 5lbs/2.27kg, 20lbs/9.08kg spool**
- **Melting Point: Solidus: 450°F(236°C) Liquidus: 464°F (243°C)**

DESCRIPTION	CODE	CASE/QTY
Nev'r-Leak Superior Lead-Free Solder 97/3, 3 mm (1/8")	WSPNL12501	50
Nev'r-Leak Superior Lead-Free Solder 97/3, 3 mm (1/8")	WSPNL12505	4
Nev'r-Leak Superior Lead-Free Solder 97/3, 3 mm (1/8")	WSPNL12520	1

# WIRE SOLDER: LEAD FREE AND TIN LEAD SOLDERS



## STANDARD LEAD FREE

### 95% Tin, 5% Antimony

**Standard Lead Free 95/5 Solder** is an environmentally safe solder. It meets all the requirements of being lead free and zinc free. It has been specifically formulated to meet all requirements of Government safe drinking water laws which ban the use of lead-bearing Solders. **Standard Lead Free Solder** will produce strong, dependable joints, and will also avoid corrosion problems. These joints will be completely safe for drinking water systems.

- **Weight: 1lb/454g, 5lbs/2.27kg, 20lbs/9.08kg spool**
- **Melting Point: Solidus: 450°F(232°C) Liquidus: 464°F (240°C)**

DESCRIPTION	CODE	CASE/QTY
95/5 Standard Lead-Free Solder, 3mm (1/8")	WSP95512501	50
95/5 Standard Lead-Free Solder, 3mm (1/8")	WSP95512505	4
95/5 Standard Lead-Free Solder, 3mm (1/8")	WSP95512520	1



## TIN LEAD SOLDER

### 50% Tin, 50% Lead

For Non-Potable Water Applications only. **50/50 Tin Lead Solder** is the most popular all purpose high grade solder, used on copper and brass, especially on plumbing and electrical work. **50/50 Tin Lead Solder** gives a strong joint under most conditions.

- **Weight: 1lb/454g, 5lbs/2.27kg, 20lbs/9.08kg spool**
- **Other spool sizes available upon request**

DESCRIPTION	MELTING POINT	CODE	CASE/QTY
50/50 Wire Solder, 3mm (1.8")*	Solidus: 61°F(183°C) Liquidus: 421°F (216°C)	WSP505012501	50
50/50 Wire Solder, 3mm (1.8")	Solidus: 61°F(183°C) Liquidus: 421°F (216°C)	WSP505012505	4
50/50 Wire Solder, 3mm (1.8")	Solidus: 61°F(183°C) Liquidus: 421°F (216°C)	WSP505012520	1
30% Tin, 70% Lead, 3mm (1.8")	Solidus: 361°F(183°C) Liquidus: 491°F (255°C)	WSP307012501	50
40% Tin, 60% Lead (1.8")	Solidus: 361°F(183°C) Liquidus: 460°F (238°C)	WSP406012501	50
60% Tin, 40% Lead (1.8")*	Solidus: 361°F(183°C) Liquidus: 374°F (190°C)	WSP604025201	50

\* Also Available in Resin and Acid Core – 1 lb 1/8" (3mm) Diameter

# BAR SOLDER AND SOLDER PASTE



## 50/50 BAR SOLDER

50/50 Bar Solder was developed for non-potable water applications only.

- **Melting Point: Solidus: 361°F(183°C) Liquidus: 421°F (216°C)**

DESCRIPTION	CODE	CASE/QTY
50/50 Bar Solder	BS5050C	50 lb



## SOLDER PASTE

Petroleum based Lead Free Solder Flux that can be used both with Lead free and Tin/Lead solders. Strong and fast acting; cleans, fluxes and helps reduce oxidation of metal after proper surface preparation has been completed. Exceeds ASTM B813 specifications

DESCRIPTION	CODE	CASE/QTY
Solder Paste 56g	PAS05	10
Solder Paste 500g	PAS5	10

# SILVER BRAZING ALLOYS

Copper based filler metals that meets the needs for high-strength applications; historically used in HVAC, Refrigeration, Plumbing and Medical Gas applications.



In Copper to Copper applications these alloys are self-fluxing; Copper to Copper Alloys (Brass or Bronze) do require a flux to help reduce oxide build up and improves for capillary action of the filler metal. These alloys are not suitable in joining Ferrous Metals. **Please confirm your local or national codes for Medical Gas specifications and applications.**

## SIL-FOS 5®

**Silver: 5.0% ± 0.2%, Copper: 89.0% ± 1.0%, Phosphorus: 6.0% ± 0.2%, Other Elements (Total): 0.15% Max**

Sil\_Fos 5® was developed primarily for use on copper, but its use has extended to other non-ferrous copper base alloys. It is used extensively on refrigeration units, air conditioning apparatus, electrical conductors, copper and brass pipe fittings, and other copper and brass equipment.

- **Melting Point (Solidus): 1190°F (643°C) | Flow Point: 1325°F (718°C)**
- **Brazing Temperature Range: 1325°F-1500°F (718°C-815°C)**

## SIL-FOS 15®

**Silver: 15.0% ± 0.5%, Copper: 80.0% ± 1.0%, Phosphorus: 5.0% ± 0.2%, Other Elements (Total): 0.15% Max**

Sil\_Fos 5® was developed primarily for use on copper, but its use has extended to other non-ferrous copper base alloys. It is used extensively on refrigeration units, air conditioning apparatus, electrical conductors, copper and brass pipe fittings, and other copper and brass equipment.

- **Melting Point (Solidus): 1190°F (643°C) | Flow Point: 1300°F (705°C)**
- **Brazing Temperature Range: 1300°F-1500°F (705°C-815°C)**

## FOS-FLO 7®

**Phosphorus: 7.25% ± 0.25%, Copper: Balance, Other Elements (Total): 0.15% Max**

Fos-Flo is a low cost brazing filler metal suitable for joining copper to copper and copper to copper alloys where critical impact or vibration stresses are not encountered in service. It should only be used on assemblies where good fit-up can be maintained.

- **Melting Point (Solidus): 1310°F (710°C) | Flow Point: 1460°F (793°C)**
- **Brazing Temperature Range: 1350°F-1550°F (732°C-843°C)**

DESCRIPTION	CODE	DIAMETER	APPROX. PC/lb	CONTAINER WEIGHT	AWS
SIL-FOS #5X20"	HHSIL0516	1.6mm	54	1lb	BCuP-3
SIL-FOS #5X20"	HHSIL0524	2.4mm	24	1lb	BCuP-3
SIL-FOS #15X20"	HHSIL1516	1.6mm	54	1lb	BCuP-5
SIL-FOS #15X20"	HHSIL1524	2.4mm	24	1lb	BCuP-5
FOS-FLO 7X20"	HHFOSFLO0720	0.050"x0.125"	28	1lb	BCuP-2

# SOLDERING ACCESSORIES: BRUSHES

Strong, durable and made with the professional in mind. CMP Plumbing accessories will help you get the job done!



## FITTING BRUSHES

The plumbers choice for cleaning Copper and Brass Fittings. Durable plastic tear drop shaped handle for easy and comfortable use. Strong steel bristles for fast, effective and dependable use.

DESCRIPTION	CODE	CASE/QTY
1/2" Fitting Brush with Handle	FBHDH12	10
3/4" Fitting Brush with Handle	FBHDH34	10
1" Fitting Brush with Handle	FBHDH1	10
1 1/4" Fitting Brush with Handle	FBHDH114	5
1 1/2" Fitting Brush with Handle	FBHDH112	5
2" Fitting Brush with Handle	FBHDH2	5



1/2" Econo Brush	FBECO12	10
3/4" Econo Brush	FBECO34	10
1" Econo Brush	FBECO1	10



## ACID BRUSH

Natural horse hair bristles that are economical and perfect for applying solder paste and flux.

DESCRIPTION	CODE	CASE/QTY
1/2" Acid Brush	ABTPH12	144

# SOLDERING ACCESSORIES: CLEANING ABRASIVES

CMP Abrasives are Strong, Flexible and Durable - for properly cleaning and etching Copper pipe, Copper and Brass fittings.



## SAND CLOTH

Abrasive sand cloth in tough Aluminum Oxide abrasive backed by a strong cotton fabric to get the job done. Water resistant.

DESCRIPTION	CODE	CASE/QTY
1 3/8" Sand Cloth 120 Grit - 5 Yards	ASC120Y5	100



## MESH CLOTH

Superior Open Mesh Aluminum Oxide Abrasive that is water-proof for working under all conditions.

DESCRIPTION	CODE	CASE/QTY
1 3/8" Mesh Cloth 180 Grit - 5 Yards	AGC180Y5	50

# LEAD WASTE CONNECTIONS

With over 125 years of experience, CMP Plumbing manufactures the best lead connections on the market.



## STUBS

Connections are available in Copper, Aluminum and ABS to work with standard replacements or ABS upgrades saving you time and money.\*

DESCRIPTION	CODE MJ	CODE ABS
4" X 8"	MJ408	ABS408
3" X 4" X 8"	MJ3408	ABS3408
4" X 10"	MJ410	ABS410
3" X 4" X 10"	MJ3410	ABS3410
4" X 12"	MJ412	ABS412
3" X 4" X 12"	MJ3412	ABS3412
4" X 14"	MJ414	ABS414
3" X 4" X 14"	MJ3414	ABS3414

\* Custom lengths available



## BENDS

Connections are available in Copper, Aluminum and ABS to work with standard replacements or ABS upgrades saving you time and money.\*

DESCRIPTION	CODE MJ	CODE ABS
3" X 4" X 8" X 8"	MJ34808	ABS34808
4" X 8" X 8"	MJ4808	-
3" X 4" X 8" X 10"	MJ34810	ABS34810
4" X 8" X 10"	MJ4810	ABS4810
3" X 4" X 8" X 12"	MJ34812	ABS34812
4" X 8" X 12"	MJ4812	

DESCRIPTION	CODE ALUMINUM MJ
3" x 4" x 8"	AL3408
3" x 4" x 10"	AL3410
3" x 4" X 12"	AL3412

\* Custom lengths available



---

# W A T E R W O R K S

---

CMP combines years of casting and quality control expertise to offer the highest quality Anodes for Cathodic Protection applications in the market today. Our commitment to customer satisfaction is our number one priority and CMP is certified ISO-9001 to insure consistent quality in our products.



# CATHODIC PROTECTION: MAGNESIUM ANODES

## HIGH-POTENTIAL CAST MAGNESIUM ANODES



CMP offers the most powerful protection available today with our line of Hi-Potential Cast Magnesium anodes. Cast from high-purity magnesium to ASTM B-843 specifications; these anodes produce an open circuit potential of 1.77-1.82 volts. Efficiency of the anode can be further enhanced when installed in a backfill of 75% gypsum, 20% bentonite and 5% sodium sulfate. This mixture allows optimal electrical current to flow more easily to the targeted structure by lowering the anode to earth resistance.

All CMP anodes are manufactured to strict quality control standards and ongoing audits to ensure the highest quality that our customers have come to appreciate and expect.

CMP Hi-Potential Cast Magnesium anodes are available packaged in a water permeable cardboard tube or cotton bag in a low resistivity, quick wetting prepared backfill material. All anodes are available with a wide variety of connecting wires.

**Aluminum: 0.01%, Manganese: 0.50-1.3%, Silicon: 0.05%,  
Copper: 0.02%, Nickel: 0.001, Iron: 0.003,  
Others, Total: 0.30%, Magnesium: Remainder.**

ANODE WEIGHT		ANODE SIZE			PACKAGING TYPE					
					CARDBOARD TUBE			COTTON BAG		
lb	kg	LENGTH in/mm	WEIGHT in/mm	HEIGHT in/mm	DIA in/mm	LENGTH in/mm	WEIGHT lb/kg	DIA in/mm	LENGTH in/mm	WEIGHT lb/kg
5	2.3	7.9/200	3.5/89	3.7/95	5/127	11.8/300	12/5.5	5.9/150	11.8/300	17/7.7
9	4.0	13.6/345	3.5/89	3.7/95	5/127	17.7/450	18.9/8.6	5.9/150	17.7/450	26.8/12.2
17	7.7	25.2/641	3.5/89	3.7/95	5/127	30/760	33/15.0	5.9/150	30/760	43/19.5
32	14.5	19.5/495	5.5/140	5.7/146	8/203	27.5/700	90/40.9	9.4/240	27.5/700	90/40.8

# ZINC ANODES AND TRACER WIRE

## HIGH-POTENTIAL CAST ZINC ANODES



CMP's full line up of Zinc packaged anodes are the most widely used and effective choice for preventing corrosion on selected soils. All zinc anodes are made to ASTM B-418, Type II alloy standard, allowing these anodes to produce an open circuit of 1.1 volts.

All packaged anodes are prepackaged in low resistivity, quick wetting prepared backfill consisting of 75% gypsum, 20% bentonite and 5% sodium sulfate. This mixture allows optimal electrical current to flow more easily to the targeted structure by lowering the anode to earth resistance. Zinc packaged anodes offer a 90% current efficiency and deliver a current capacity of 335 amp-hrs/lb. All our anodes are manufactured to strict quality control standards and ongoing audits to ensure the highest quality that our customers have come to appreciate and expect.

All packaged anodes are prepackaged in cardboard tubes with low resistivity.

**Chemical Composition - ASTM B 418 Type II: Aluminum: 0.005% max, Cadmium: 0.003% max, Iron: 0.0014 max, Lead: 0.003 max, Copper: 0.002 max, Zinc: Remainder.**

ANODE WEIGHT lb/kg	ANODE SIZE			PACKAGING TYPE		
	LENGTH in/mm	WEIGHT in/mm	HEIGHT in/mm	CARDBOARD TUBE		
				DIA in/mm	LENGTH in/mm	WEIGHT lb/kg
5/2.3	10/254	1.5/38	1.5/38	4/100	13.4/340	13.4/6.1
6/2.8	12/305	1.5/38	1.5/38	4/100	15.0/380	16/7.3
9/4.2	18/457	1.5/38	1.5/38	4/100	20.8/530	22/10
12/5.6	24/610	1.5/38	1.5/38	4/100	27.1/690	31/14.1
17/7.9	34/860	1.5/38	1.5/38	4/100	37/940	42/19.1
24/11.1	48/1220	1.5"/38	1.5/38	4/100	51.2/1300	57/25.9



## TRACER WIRE

RWU 90 Wire is designed for direct burial. Maximum Conductor Temperature - 90° C. Up to 1000 Volts. \*

DESCRIPTION	CODE	CASE/QTY
#6 AWG 7 Stranded Copper Wire RWU90 - White	CWIREINSWRWU6	300m
#10 AWG 7 Stranded Copper Wire RWU90 - White	CWIREINSWRWU10	300m
#12 AWG 7 Stranded Copper Wire RWU90 - White	CWIREINSWRWU12	300m

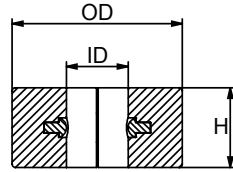
\* Custom Gauges, Solid and Stranded Wire and Insulations Types and Colors are also available.

# ZINC COLLAR ANODES AND ZINC CAPS



## ZINC COLLAR ANODES

Includes bolt retaining washers to prevent the anode from falling off.



DESCRIPTION	CODE	WEIGHT	HEIGHT	OUTSIDE DIA	INSIDE DIA
3/4" Zinc Collar Anode	CMC01	0.66 kg/ 0.3lb	25mm/ 1"	54mm/ 2 1/8"	19mm/ 3/4"
7/8" Zinc Collar Anode	CMC02	0.64kg/ 0.29lb	25mm/ 1"	54mm/ 2 1/8"	22mm/ 7/8"
1" Zinc Collar Anode	CMC03	1.21kg/ 0.55lb	32mm/ 1 1/4"	63mm/ 2 1/2"	25mm/ 1"
1 1/8" Zinc Collar Anode	CMC04	1.10kg/ 0.50lb	32mm/ 1 1/4"	63mm/ 2 1/2"	28mm/ 1 1/8"
1 1/4" Zinc Collar Anode	CMC05	1.15kg/ 0.52lb	32mm/ 1 1/4"	63mm/ 2 1/2"	32mm/ 1 1/4"
1 3/8" Zinc Collar Anode	CMC06	1.61kg/ 0.73lb	32mm/ 1 1/4"	76mm/ 3"	35mm/ 1 3/8"
1 1/2" Zinc Collar Anode	CMC07	1.48kg/ 0.67lb	32mm/ 1 1/4"	76mm/ 3"	38mm/ 1 1/2"
1 3/4" Zinc Collar Anode	CMC08	2.27kg/ 1.03lb	35mm/ 1 3/8"	89mm/ 3 1/2"	44mm/ 1 3/4"
2" Zinc Collar Anode	CMC09	2.08kg/ 0.95lb	35mm/ 1 3/8"	89mm/ 3 1/2"	51mm/ 2"



## ZINC CAPS

CMP Zinc Cap anodes are produced from only the highest grade zinc and manufactured to meet ASTM Standard B-418 (latest version) Type II standard. Engineered to fight and prevent corrosion to extend the life of expensive underground fittings, flanges and mechanical joint assemblies.

- Thread on for easy installation

DESCRIPTION	THREAD SIZE	CODE	WRENCH SIZE
Small Zinc Caps - 2.5 oz	5/8-11 UNC	SGZC625S	1"
Small Zinc Caps - 2.5 oz	3/4-10 UNC	SGZC750S	1"
Large Zinc Caps - 6 oz	5/8-11 UNC	SGZC625	1 1/2"
Large Zinc Caps - 6 oz	3/4-10 UNC	SGZC750	1 1/2"



---

# LEGEND ROOFING PRODUCTS

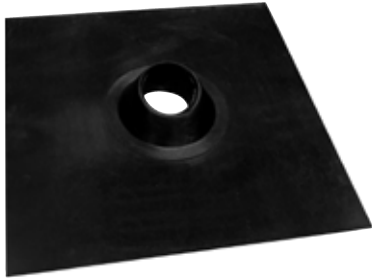
---

For over 125 years CMP has been a leading manufacturer of non-ferrous metal products. We continue to produce a full line of lead flashings for the Roofing and Plumbing Industries and over the years we have expanded our overall offering to include Rubber, Thermoplastic, Aluminum, Galvanized and Zinc products. We now market our Roofing Line under Legend Roofing Products to reflect the growth of this division. Whether the application is for commercial or residential; Legend Roofing Products will meet your needs.

Legend Roofing Products — A Tradition of Building Tomorrow!

# RUBBER FLASHINGS

UV Stabilized • Thick • Tough • Flexible • Water Tight



## B ROOF FLASHING

A unique profile double-seals on pipe, creating a permanent barrier to moisture. Ideal for cold weather. 19.7" x 19.7" (500mm x 500mm) large base ensures a leak free installation. Extra thick material EPDM rubber assuring longest life possible

- Suitable for 2/12 to 6/12 roof pitches
- Meets CSA B272 and UPC PS64

**Note: Do not use petroleum based roof sealants with this product.**

DESCRIPTION	CODE	WEIGHT/PC	QTY/CASE	FITS
1 1/2" B Rubber Flashing	FRBVII15	0.95lb(430g)	15	Plastic*
2" B Rubber Flashing	FRBVII2	0.95lb(432g)	15	Plastic*
3" B Rubber Flashing	FRBVII3	0.97lb(440g)	15	Cu, Plastic and C/I**
4" B Rubber Flashing	FRBVII4	0.99lb(448g)	15	Plastic and C/I**

\* Plastic - ABS and PVC  
\*\*C/I - Cast Iron



## FLEXIBLE ROOF FLASHING

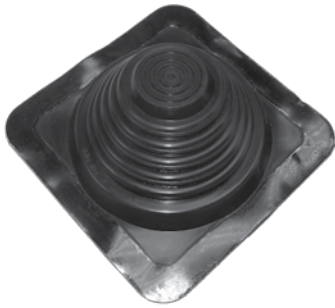
Specially formulated to prevent weathering caused by the Ultra Violet Rays. Self-Sealing Gasket. Flexible for easy installation.

- For Roof Pitches up to 12/12
- Heat tested to 180°F for Type B Installations
- Meets UPC PS64 Standard



DESCRIPTION	CODE	WEIGHT/PC	QTY/CASE	DIMENSIONS
1 1/4"-1 1/2" Flexible Roof Flashing	TPEFF15	0.43 lb (195g)	12	9" x 11 3/8"
2" Flexible Roof Flashing	TPEFF2	0.43 lb (195g)	12	9" x 11 3/8"
3" Flexible Roof Flashing	TPEFF3	0.47 lb (213g)	12	10" x 13 1/4"
4" Flexible Roof Flashing	TPEFF4	0.58 lb (263g)	12	11 1/2" x 14"

# RUBBER FLASHINGS



## METAL ROOF FLASHING

Made from EPDM with a flexible aluminum base edge. EPDM is resistant to ultra violet rays, prevents weathering and cracking . Aluminum base edge molds to multiple surfaces.

DESCRIPTION	CODE	WEIGHT	QTY/CASE
YS-13 1/4"-4" Multi Flashing for Metal Roofs	RFPYS13	0.89 lb	80
YS-14 4"-7" Multi Flashing for Metal Roofs	RFPYS14	1.0 lb	80



## 5-IN-1 MULTI

The one flashing with the ability to fit 1.25", 1.5", 2", 3" and 4" ABS pipe sizes and 1.5" and 2" Copper

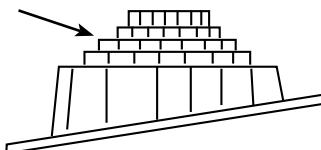
- Suitable for 3.5/12 to 12/12 Roof Pitches
- Made of SanpoPRE™ Rubber with UV Stabilizing\* to Ensure Long Life and Flexibility to Maintain Tension Against the Pipe Ensuring a Leak Free Installation
- 13" x 13" (300mm x 300mm) Large Base Ensures a Leak Free Installation
- Meets CSA B272 and UPC PS64

\*Advanced additives including UV stabilizers are used to protect and maximize the flashing flexibility allowing the watertight seal to keep working for the long term.

DESCRIPTION	CODE	WEIGHT/PC	QTY/CASE
5 in 1 Multi II Black	RFPMULTIII	0.51lb(230g)	25
5 in 1 Multi Beige	RFPMULTIBGE	0.51lb(230g)	25
5 in 1 Multi Brown	RFPMULTIBRN	0.51lb(230g)	25

## STEP BY STEP INSTALLATION:

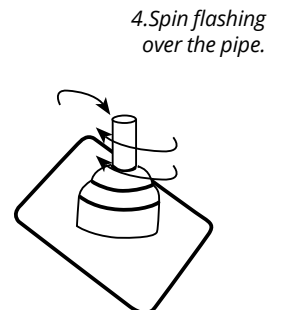
1. Locate the pipe opening size required and tear away sizes to match.



2. Insert a sharp tool or knife into the perforation. Once the cut has started, simply pull away the excess material with your hand.



3. Carefully place flashing over pipe and thread flashing turning when applying pressure downward in a spiralling motion until flashing is at desired position.



# THERMOPLASTIC FLASHINGS AND ZINC STRIP

Hard molded base with flexible neoprene gasket.



## THERMOPLASTIC BASE FLASHING

- UV And Extreme Cold Resistant
- Built In Water Deflectors
- Fits Roof Pitches from 2/12 to 12/12

DESCRIPTION	CODE	COLOUR	PCS/BOX
12.9" x 14.9" (328mm x 378mm)	BF15	Black	25
12.9" x 14.9" (328mm x 378mm)	BF2	Black	25
16" x 16" (406mm x 406mm)	BF3	Black	25
16.1" x 17.8" (410mm x 452mm)BF4	BF4	Black	25



## 99% PURE ZINC STRIP

Moss Repellent. Helps to prevent those unsightly roof stains by inhibiting the formation of moss, algae, lichen, fungus and mildew on wood and composite shingles and flat tile roofs.

DESCRIPTION	CODE	Q/BOX	WEIGHT
Roll size: 2 5/8" x 50'	ZINCSTRIP	12	40 lbs

# LEAD FLAT FLASHINGS

Made to ASTM specifications • Flexible • Custom sizes available



## 3 LB LEAD FLAT FLASHING

DESCRIPTION	CODE	Q/BOX	WEIGHT lbs
3/4" Ip Flat Flashing	FF075I	N/A	3.2
1" Ip Flat Flashing	FF1I	N/A	4.0
1 1/4" Ip Flat Flashing	FF125I	12	4.5
1 1/2" Ip Flat Flashing	FF15I	12	4.77
2" Ip Flat Flashing	FF2I	10	5.4
3" Ip Flat Flashing	FF3I	6	6.65
4" Ip Flat Flashing	FF4I	4	7.0
5" Ip Flat Flashing	FF5I	N/A	9.5
6" Ip Flat Flashing	FF6I	N/A	12.0
1" Cu Flat Flashing	FF1C	N/A	4.0
1 1/4" Cu Flat Flashing	FF125C	N/A	3.85
3" Cu Flat Flashing	FF3C	N/A	6.0



## 4 LB LEAD FLAT FLASHING

DESCRIPTION	CODE	Q/BOX	WEIGHT lbs
1 1/4" Ip Flat Flashing	FF125I4	12	5.3
1 1/2" Ip Flat Flashing	FF15I4	12	5.6
2" Ip Flat Flashing	FF2I4	10	6.0
3" Ip Flat Flashing	FF3I4	6	8.1
4" Ip Flat Flashing	FF4I4	4	9.0

# LEAD PITCHED FLASHINGS

Custom Pitches Available



## 3 LBS 5/12 LEAD PITCHED FLASHING

- Range: 4/12 to 6/12 Pitch

DESCRIPTION	CODE	Q/BOX	WEIGHT lbs
1" IP pitched flashing	PF1I	N/A	4.0
1 1/4" IP pitched flashing	PF125I	N/A	4.5
1 1/2" IP pitched flashing	PF15I	12	4.8
2" IP pitched flashing	PF2I	10	5.4
3" IP pitched flashing	PF3I	6	6.7
4" IP pitched flashing	PF4I	4	7.0
5" IP pitched flashing	PF5I	N/A	9.5
6" IP pitched flashing	PF6I	N/A	12.0
1 1/4" CU pitched flashing	PF125C	N/A	12.0
3" CU pitched flashing	PF3C	N/A	6.0

## 3 LBS 8/12 LEAD PITCHED FLASHING

- Range: 7/12 to 9/12 Pitch



DESCRIPTION	CODE	Q/BOX	WEIGHT lbs
1 1/2" IP pitched flashing	PF15I083	12	4.6
2" IP pitched flashing	PF2I083	10	4.9
3" IP pitched flashing	PF3I083	6	6.0
4" IP pitched flashing	PF4I083	4	7.3

# LEAD PITCHED FLASHINGS

Custom Pitches Available



## 3 LBS 11/12 LEAD PITCHED FLASHING

- Range: 10/12 to 12/12 Pitch

DESCRIPTION	CODE	Q/BOX	WEIGHT lbs
1 1/2" IP pitched flashing	PF15I113	12	4.6
2" IP pitched flashing	PF2I113	10	5.2
3" IP pitched flashing	PF3I113	6	7.2
4" IP pitched flashing	PF4I113	4	7.3



## 4 LBS 5/12 LEAD PITCHED FLASHING

- Range: 4/12 to 6/12 Pitch

DESCRIPTION	CODE	Q/BOX	WEIGHT lbs
1" IP pitched lead flashing	PF1I054C	12	5.0
1 1/4" IP pitched flashing	PF125I054C	12	5.3
1 1/2" IP pitched lead flashing	PF15I054C	12	5.6
2" IP pitched flashing	PF2I054C	10	6.0
3" IP pitched flashing	PF3I054C	6	8.1
4" IP pitched flashing	PF4I054C	4	9.0

# FLEXIBLE AND RETRO-FIT FLASHINGS AND CAPS



## 3LB AND 4LB ADJUSTABLE LEAD FLASHINGS

- Flat to 4/12
- 12" x 12" Base

DESCRIPTION	CODE	Q/BOX	WEIGHT lbs
1 1/2" 3lb Flashing	FFC15I	12	4.6
2" 3lb Flashing	FFC2I	10	5.0
3" 3lb Flashing	FFC3I	6	7.1
4" 3lb Flashing	FFC4I	4	8.0
1 1/2" 4lb Flashing	FFC15I4	12	5.6
2" 4lb Flashing	FFC2I4	10	6.0
3" 4lb Flashing	FFC3I4	6	8.1
4" 4lb Flashing	FFC4I4	4	9.0



## RETRO-FIT WEATHERHEAD FLASHING

Two piece Lead Flashing for replacing Electrical Mast Flashings. Comes complete with Stainless Steel Hose Clamp for solder less installations.

- 5/12 pitch
- 12" x 12" base

DESCRIPTION	CODE	Q/BOX	WEIGHT lbs
2" Split Flashing	PFS2I310	6	6.5

## LEAD FLASHINGS CAPS



DESCRIPTION	CODE	Q/BOX	WEIGHT lbs
1 1/4" IP Flashing Cap	FC125I	12	0.7
1 1/2" IP Flashing Cap	FC15I	12	0.8
2" IP Flashing Cap	FC2I	10	1.1
3" IP Flashing Cap	FC3I	6	1.5
4" IP Flashing Cap	FC4I	4	2.0
5" IP Flashing Cap	FC5I	1	4.0
1 1/4" CU Flashing Cap	FC125C	12	0.5
3" CU Flashing Cap	FC3C	6	1.2

# ALUMINUM STACK FLASHINGS AND CAPS

Heavy Gauge Aluminum is Brazed for Maximum Strength • Slotted for Easy Fastening • Meets CSA B272



## 12" FLASHING BASES

DESCRIPTION	CODE	WEIGHT lbs	PCS/BOX
1 1/4" Aluminum	AFF125I	0.75	21
1 1/2" Aluminum	AFF15I	0.96	21
2" Aluminum	AFF2I	1.00	21
3" Aluminum	AFF3I	1.46	14
4" Aluminum	AFF4I	1.56	10



## 18" FLASHING BASES

DESCRIPTION	CODE	WEIGHT lbs	PCS/BOX
1 1/4" Aluminum	AFF12518I	1.37	32
1 1/2" Aluminum	AFF1518I	1.37	32
2" Aluminum	AFF218I	1.39	32
3" Aluminum	AFF318I	1.94	14
4" Aluminum	AFF418I	2.64	10



## FLASHING CAPS

DESCRIPTION	CODE	WEIGHT lbs	PCS/BOX
1 1/4" Aluminum	AFC125I	0.20	25
1 1/2" Aluminum	AFC15I	0.28	50
2" Aluminum	AFC2I	0.35	50
3" Aluminum	AFC3I	0.49	40
4" Aluminum	AFC4I	0.75	40

# ALUMINUM AND GALVANIZED FLASHINGS



## HIGH DOME FLASHING

Featuring a seamless spun 20"x20" aluminum base; durable heavy duty EPDM gasket.

DESCRIPTION	CODE	WEIGHT lbs	PCS/BOX
3" Aluminum	AFHD3	1.9	12
4" Aluminum	AFHD4	1.95	12



## GALVANIZED BOOT FLASHING

- 24 Gauge Galvanized Base
- Durable EPDM Gasket
- Roof Pitch: Up to 12/12
- Heat Tested to 180°F
- For Type B Installations

DESCRIPTION	CODE	WEIGHT/PC	QTY/CASE	BASE DIMENSIONS
1 1/4" - 1 1/2"	GBECF15	0.9 lb(408g)	12	8 3/4" x 12 1/2"
2"	GBECF2	0.9 lb(408g)	12	8 3/4" x 12 1/2"
3"	GBECF3	1.2 lb(544g)	12	10 3/4" x 14 1/2"
4"	GBECF4	1.4 lb(544g)	12	12" x 15 1/2"

# GALVANIZED VENTING PRODUCTS

Heavy Duty 26 Gauge Galvanized Steel • Weld-Rite



## **B VENT CHIMNEY**

- Heavy Duty 26 Gauge Galvanized Steel
- "Weld-Rite"
- Sizes 4" – 6"

DESCRIPTION	CODE
4" Flat B Vent Chimney Roof Flashing	FFBV4
5" Flat B Vent Chimney Roof Flashing	FFBV5
6" Flat B Vent Chimney Roof Flashing	FFBV6



## **PITCHED B VENT CHIMNEY**

- Heavy Duty 26 Gauge Galvanized Steel
- "Weld-Rite"
- Sizes 4" – 6"

DESCRIPTION	CODE
4" Flat B Vent Chimney Roof Flashing	PFBV4
5" Flat B Vent Chimney Roof Flashing	PFBV5
6" Flat B Vent Chimney Roof Flashing	PFBV6



## **STORM COLLAR**

- Sizes: 4"-6"

DESCRIPTION	CODE
Storm Collar 4"	SC4
Storm Collar 5"	SC5
Storm Collar 6"	SC6

# GALVANIZED VENTING PRODUCTS

Provides Peace of Mind While Using Torch On Application



## SQUARE GOOSENECK VENT

- Heavy Duty 26 Gauge Galvanized Steel
- ¼" Mesh Screen
- Superior Welding Quality
- Rated for Temperatures in Excess of 700°F

DESCRIPTION	CODE
<i>Square Gooseneck Vent 8"x8" Galvanized</i>	VSG0808GAL



## BUILT UP ROOF VENT

- Superior Welding Quality
- Rated for Temperatures in Excess of 700°F
- Heavy Duty 26 Gauge Galvanized Steel
- ¼" Mesh Screen
- 9" Clearance from Any Possible Water

DESCRIPTION	CODE
<i>Built Up Roof Vent 8" x 8"</i>	VBR260808

# SHEET LEAD









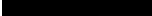
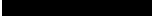


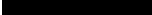

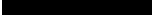
Custom sizes available for all your flashing and weatherproofing needs.



## SHEET LEAD

Common Uses: Radiation Shielding, X-Ray Protection, Waterproofing, Roof Flashings, Sound Proofing, Special Effects, Corrosion Protection and Anti-Vibration Pads.

- Available in thicknesses from 1/32" to 1". Custom lead sheets available upon request.
- Standard thicknesses available up to 48" wide.
- Sheet Lead shall meet or exceed ASTM B29, ASTM B749, and Federal QQ-L-201F grade C specifications.
- Antimonial-Lead sheet is also available.
- Length up to 20'

Actual Fraction	Approx Lbs/Ft <sup>2</sup>	Approx. Thickness	Actual Metric (mm)
1/32	2#		0.8
5/128	2 1/2#		1.0
3/64	3#		1.2
1/16	4#		1.6
5/64	5#		2.0
3/32	6#		2.4
1/8	8#		3.2
5/32	10#		4.0
3/16	12#		4.8
7/32	14#		5.6
1/4	16#		6.4
1/3	20#		8.5
1/2	30#		12.7
2/3	40#		17
1	60#		25.4

**Vancouver Office:**

7733 Progress Way,  
Delta, BC V4G 1A3  
*Phone 604.940.2010*  
*Fax 604.952.2650*

**Virginia Warehouse:**

2000 Amedeo Court  
Suffolk, VA 23434  
*Phone 757.932.9299*  
*Fax 757.932.9389*