

The BEST Plumbing Specialties. One Source.

**E-1**

**E**

## SHOWER HEADS

### SHOWER HEAD - PEAR STYLE



- Chrome
- 3 function: spray, pulsating and jet settings
- Pear style
- Display packaged
- cUPC approved

PART#	DESCRIPTION
1201	3 function shower head

### SHOWER HEAD - ADJUSTABLE, SOLID BRASS VANDAL RESISTANT



- Solid brass shower heads
- 2 sizes, 1-1/4" & 2-1/4"
- Vandal resistant models available
- Chrome finished
- cUPC approved

PART#	TYPE	FACE SIZE
2036	Standard	1-3/4" diameter
2037	Standard	2-1/4" diameter
2036VP	Vandal resistant	1-3/4" diameter
2037VP	Vandal resistant	2-1/4" diameter

### SHOWER HEAD - DELUXE MESSAGE - CSA



- 1.5 GPM @ 60psi
- 3 function pulsating massage
- Fingertip control
- Display carded
- CSA approved

PART#	DESCRIPTION
1208	Chrome plated
1208BN	Brushed nickel

**TUB & SHOWER**

**E-2**

**SECTION E**

**E**

**SHOWER HEADS**

**SHOWER HEAD - SUREFLOW**



- 1/2" FPT
- Easily adjusts from fine to peppery spray
- Chrome plated brass ball joint
- 2.5 GPM @ 70 PSI
- Removable filter screen prevents clogging of spray
- SIMPLY THE BEST SHOWER HEAD
- CSA approved

**SHOWER HEAD - SUREFLOW ALL CHROME**



- 1/2" FPT
- Easily adjusts from fine to peppery spray
- Chrome plated brass ball joint
- 2.5 GPM @ 70 PSI
- Removable filter screen prevents clogging of spray
- SIMPLY THE BEST SHOWER HEAD
- CSA approved

PART#	DESCRIPTION
2001	Canadian style

PART#	DESCRIPTION
1167	All chrome

**SHOWER HEAD LYNCAR SUREFLOW  
ADJUSTABLE LOW FLOW AND  
VANDAL RESISTANT**



- SUREFLOW model
- Low flow 1.5 GPM head
- Vandal resistant model
- CSA approved

**SHOWER HEAD - SPEAKMAN  
STYLE**



- Chrome plated brass
- 6 jet adjustment
- T handle spray adjustment
- 2.5 GPM output

PART#	DESCRIPTION
2002	Low flow, SUREFLOW head
2002VP	Low flow, SUREFLOW head, vandal resistant

PART#	DESCRIPTION
1204	Shower head - SPEAKMAN style

**TUB & SHOWER**

The BEST Plumbing Specialties. One Source.

E-3

E

**SHOWER HEADS****SHOWER HEAD - SUNFLOWER**

- Solid brass
- 5" diameter
- 44 beads of spray
- Chrome or gold finish
- cUPC approved



PART#	DESCRIPTION
<b>3210</b>	Chrome plated brass
<b>3211</b>	Gold plated brass

**SHOWER HEAD  
NIAGARA CONSERVATION**

- 9-jet turbo massage is adjustable: gentle needle spray to forceful jet
- Consistent flow rate regardless of water pressure
- Saves 40% more water & energy than a standard 2.5 GPM showerhead
- Non-aerating spray means less temperature loss
- Self-cleaning & maintenance-free
- Corrosion-resistant, high-impact ABS thermoplastic body
- Meets or exceeds ANSI specifications
- 10-year guarantee
- CSA approved



PART#	DESCRIPTION
<b>1169CH</b>	Chrome
<b>1169</b>	White
<b>1169V</b>	White - vandal resistant

**SHOWER HEAD HAND HELD  
NIAGARA CONSERVATION**

- Flow rate @ high PSI:1.5 GPM
- Flow rate @ low PSI:1.0 GPM
- Stream type:spray, massage & combo
- Adjustable angle:yes
- Type of control:pressure compensator
- Head length:3-5/16" (84 mm)
- Handheld length:8-11/16" (221 mm)
- Mounting type:hand held with wall mount bracket head
- Diameter:2-11/16" (68 mm)
- Nozzle quantity:9-45 (spray dependant)
- Finish:chrome



PART#	DESCRIPTION
<b>2945CH</b>	Hand held

**SHOWER HEAD ALL  
DIRECTIONAL ARM**

- Downpour rainshower head
- Adjustable arm 9"
- 3-1/2" diameter head
- Adjustable arm
- Several finishes available

PART#	FINISH
<b>3200</b>	Chrome
<b>3201</b>	White
<b>3202</b>	Satin
<b>3203</b>	Polish brass

**SHOWER HEAD - ECONOMY**

- 1/2" FPT
- 2.75 GPM @ 70 PSI
- Adjustable
- Chrome finish
- Economy CP plastic
- Brass ball



PART#	DESCRIPTION
<b>1189CSA</b>	Shower head - economy

TUB &amp; SHOWER

**E-4****SECTION E**Tub and Shower  
Quality, Durability, Reliability**E****TUB AND SHOWER****SHOWER HOSE**

- 1/2" x 1/2"
- Double lock hose with conical end in chrome
- Our armoured metal hoses are double locked
- Double lock makes for a much stronger, longer lasting hose
- Premium quality shower hose
- NSF approved

PART#	LENGTH	FINISH
<b>55548</b>	48"	Chrome
<b>55560</b>	60"	Chrome
<b>55560BN</b>	60"	Brushed nickel
<b>55572</b>	72"	Chrome
<b>55572BN</b>	72"	Brushed nickel
<b>55584</b>	84"	Chrome

**SHOWER HIGH RISE ARM**

- Increases height of any shower head
- Chrome plated brass
- 10" length x 1/2" IPS
- Sold less shower head

PART#	LENGTH
<b>1190</b>	10" - "S" arm & flange
<b>1191</b>	8" - "S" arm & flange

**SHOWER - ADJUSTABLE ARM**

- 1/2" MPT x 1/2" FPT
- 10" length
- Chrome plated brass
- Locking wingnuts allow
- Any height adjustment
- Shower head not included

PART#	DESCRIPTION
<b>1192</b>	Shower - adjustable arm

**"L" BEND SHOWER ARM 1/2 IPS 90°**

- 1.6 mm brass
- Highest quality
- Flange included

PART#	DESCRIPTION
<b>1194</b>	10" - "L" arm
<b>119417</b>	17" - "L" arm
<b>119417BN</b>	17" - "L" arm brushed nickel

**TUB & SHOWER**

The BEST Plumbing Specialties. One Source.

**E-5****TUB AND SHOWER****E****SHOWER ARMS**

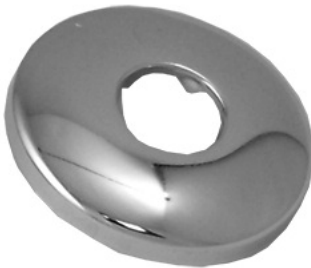
- 1.6 mm brass
- Highest quality

PART#	FINISH	SIZE
<b>1185</b>	Chrome	6"
<b>1186</b>	Chrome	8"
<b>1193</b>	Chrome	10"
<b>1185PB</b>	Polished brass	6"
<b>1186PB</b>	Polished brass	8"
<b>1185BN</b>	Brushed nickel	6"
<b>1186BN</b>	Brushed nickel	8"
<b>1193BN</b>	Brushed nickel	10"
<b>1185ORB</b>	Oil rub bronze	6"
<b>1186ORB</b>	Oil rub bronze	8"

**ROUGH IN SHOWER TEST NIPPLE**

- Performs your test before shower installation
- Threads into wing back 90 degrees
- Reusable plastic
- PEX drop ear elbow (**part#69521**) not included (**see page G-1**)

PART#	DESCRIPTION
<b>4760</b>	Shower test nipple

**SHOWER ARM FLANGE SURE GRIP**

- Slip on flanges
- For shower arms
- Several finishes available

PART#	FINISH
<b>1182</b>	Chrome
<b>1182PB</b>	Polished brass
<b>1182BN</b>	Brushed nickel

**SHOWER ARM FLANGE SET SCREW**

- Different finishes available
- With set screw

PART#	FINISH
<b>1187</b>	Chrome
<b>1187PB</b>	Polished brass
<b>1187BN</b>	Brushed nickel
<b>1187ORB</b>	Oil rubbed bronze

**TUB & SHOWER**

**E-6****SECTION E**Tub and Shower  
Quality, Durability, Reliability**E****TUB AND SHOWER****SHOWER - ARM & FLANGE PACKS**

- 1.6 mm thick 6" shower arm with SURE GRIP flange
- Shower packs with 6" brass shower arm & SURE GRIP shower flange

PART#	FINISH	DESCRIPTION
<b>1189</b>	Chrome	Arm & flange
<b>1189BN</b>	Brushed nickel	Arm & flange
<b>11895</b>	Polished brass	Arm & flange

**SHOWER - HEAD, ARM & FLANGE PACKS**

- Head , arm & flange packs with 6" brass shower arm, SURE GRIP shower flange & several choices of shower heads available
- Commonly known as builder kits
- CSA approved

PART#	DESCRIPTION	HEAD
<b>1196CSA</b>	With C.P. plastic CSA economy head(shown)	<b>1189CSA</b>
<b>11964</b>	With "SUREFLOW" head	<b>2001</b>
<b>11965</b>	With "SUREFLOW" all chrome head	<b>1167</b>
<b>12085</b>	With deluxe CSA chrome head	<b>1208</b>

**SHOWER - COMPLETE TRIM PACKS, WITH ECONOMY HEAD**

- All kits include: tub spout, shower arm 6", flange and shower head
- Boxed packaged kit
- Choose your spout and shower head
- CSA approved

PART#	SHOWER HEAD	TUB SPOUT	FINISH
<b>1199CSA</b>	Economy ( <b>part#1189CSA</b> )	Slip fit ( <b>part#1142</b> )	Chrome
<b>1198</b>	Economy ( <b>part#1189CSA</b> )	Front mounting ( <b>part#1128</b> )	Chrome
<b>1199BN</b>	Adjustable massage ( <b>part#1208BN</b> )	Slip fit ( <b>part#1142BN</b> )	Brushed Nickel

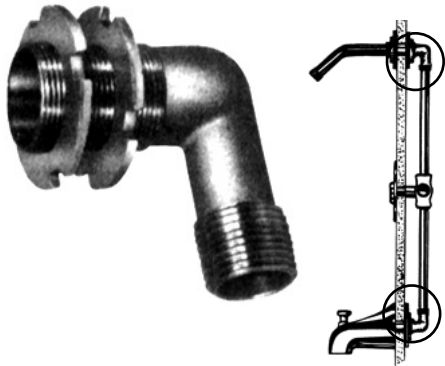
**SHOWER - COMPLETE TRIM PACKS, WITH SUREFLOW HEAD**

- CSA approved

PART#	SHOWER HEAD	TUB SPOUT
<b>1199TK</b>	SUREFLOW ( <b>part#2001</b> )	Slip fit ( <b>part#1142</b> )
<b>1198TK</b>	SUREFLOW ( <b>part#2001</b> )	Front mounting ( <b>part#1128</b> )
<b>1167TK</b>	SUREFLOW ( <b>part#1167</b> )	Slip fit ( <b>part#1142</b> )

**TUB & SHOWER**

The BEST Plumbing Specialties. One Source.

**E-7****TUB AND SHOWER****E****SHOWER ARM ELBOW**

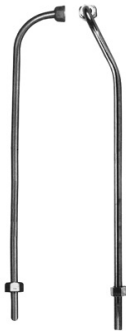
- This brass elbow securely mounts a shower arm to a fiberglass shower stall
- Can be used to secure a tub spout nipple. Can be used with copper, iron pipe or compression fittings
- Prevents movement of shower arm & tub spout
- Locknuts secure elbow to fiberglass wall
- Requires 1-1/32" hole through fiberglass
- Outlet end 1/2" FIP
- Inlet end 1/2" CWT / MPT, 1/2 PEX
- PEX end also available in 1/2" & 3/4" (see page G-8)

PART#	DESCRIPTION
<b>1195</b>	1/2" CWT / MPT
<b>1195Q</b>	1/2" CWT / MPT - bulk

**BATHCOCK ELBOW**

- 1/2" MPT
- Satin finish brass
- Sold by the pair

PART#	DESCRIPTION
<b>1793</b>	Bathcock Elbow

**SUPPLY - CLAWFOOT BATH TUBS**

- 2 styles with nuts & washers
- 1/2" chrome plated copper
- Sold per pair in boxes

PART#	DESCRIPTION
<b>1792</b>	90° single bend For 3-3/8" centers
<b>17925</b>	Offset bend for 3-3/8" to 4" centers

**ROUGH BRASS TWIN ELBOW**

- Double quarter turn brass elbow
- 3/4" x 1/2" x 1/2"
- Use on diverter spout 3/4" to 1/2" shower

PART#	DESCRIPTION
<b>1145</b>	Rough brass twin elbow

**TUB & SHOWER**



**E-8**

**SECTION E**

Tub and Shower  
Quality, Durability, Reliability

**E**

**TUB AND SHOWER**

**PUSH CONTROL SHOWER DIVERTER VALVE**



- Push-down, pull-up diverter valve changes the direction of water flow
- Very high quality construction & finish
- Standard 1/2" thread size
- Material: solid brass, all metal construction

**SHOWER ARM SHUT OFF**



- 1/2" MPT x 1/2" FPT
- Chrome plated brass
- Shower head will still dribble after shut off to prevent back flow

PART#	DESCRIPTION
<b>1166B</b>	Push control shower diverter valve chrome plated brass

PART#	DESCRIPTION
<b>1168</b>	Shower arm shut off

**SHOWER ARM DIVERTER**



- Two 1/2" MPT with one 1/2" FPT
- Chrome plated ABS plastic
- Allows connection of hand held shower

**SHOWER ARM / HOSE COMBO DIVERTER**



- Two 1/2" MPT with one 1/2" FPT
- Chrome plated brass body, ABS handle
- Allows connection of hand held shower

PART#	DESCRIPTION
<b>1166</b>	Shower arm diverter, ABS

PART#	DESCRIPTION
<b>2267</b>	Shower arm & hose diverter

**TUB & SHOWER**

