

SPECIFICATIONS

FIGURE X10P & X11P PIPING PRODUCTS



LOW-LEAD COMPLIANT WATER HAMMER ARRESTORS

FNW water hammer arrestors are engineered devices that provide maintenance-free continuous protection against water hammer. Water hammer is a hydraulic shock wave generated within a water distribution system due to a sudden stop in water flow. If allowed to exist for any length of time, water hammer can cause pipes to rattle, is capable of bursting pipes or can damage other components within the system. When installed properly, there is an unobstructed shock path to the arrestor that is absorbed by a piston-driven and isolated cushion of air.

FEATURES

- Lead-free certified
- Max Static (Working) Pressure: 150 psi
- Max Spike Pressure: 350 psi
- Temperature: 33°F to 180°F (0.6°C to 82°C)
- End Connection: NPT (X10P), CxC (X11P)
- For commercial and residential systems
- Suitable for potable water applications
- Designed for vertical or horizontal installation (not to be installed in the inverted position)
- Can be installed in systems without need for access panels*

*Always check local plumbing codes to determine if access panels are required. Sweat version not to be used in conjunction with copper propress system due to brass connection.

PRODUCT SPECIFICATIONS

Standards

- Federal Safe Drinking Water Act, Sec. 1417 (Lead-Free)
- ASSE Standard 1010
- IAPMO Listed (cUPC)

SIZING/PDI FIXTURE UNITS**

Size	PDI Size Code		PDI Fixture Units
	X10P	X11P	
1/2"	A	A	1–11
3/4"	B	B	12–32
1"	C	C	33–60
1-1/4"	D	D	61–113
1-1/2"	E	—	114–154
2"	F	—	155–330

**As outlined in The Plumbing and Drainage Institute Standard PDI-WH 201. See the FNW water hammer arrestor IOM for more details.



Low-Lead Compliant: Referring to laws defining "Lead-Free" as wetted surface of pipe, fittings and fixtures in potable water systems that have a weighted average lead content $\leq 0.25\%$ per the Safe Drinking Water Act (Sec. 1417) amended 1-4-2011, as well as other state regulations.

FIGURE NUMBER MATRIX

FNW		END	SIZE
END TYPE		SIZE CODE	
Male NPT (1/2" to 2") = X10P	1/2" = D	3/4" = F	1" = G
	1-1/4" = H	1-1/2" = J	2" = K
Copper Sweat (1/2" to 1-1/4") = X11P			

SPECIFICATIONS

FIGURE X10P & X11P
PIPING PRODUCTS



LOW-LEAD COMPLIANT WATER HAMMER ARRESTORS

FIG. X10P

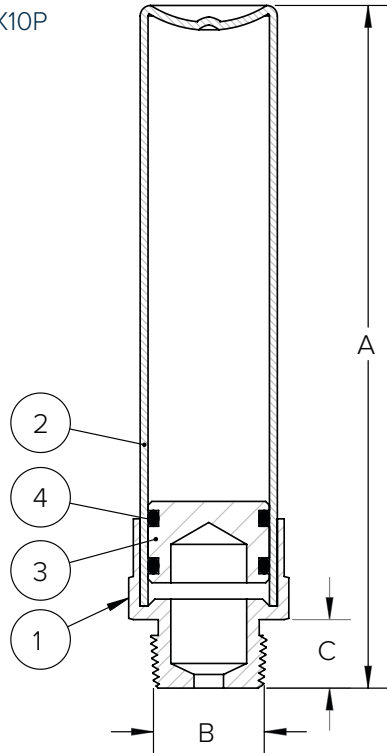
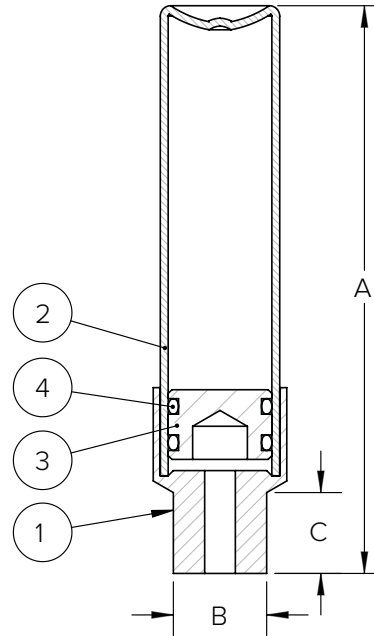


FIG. X11P



STANDARD MATERIALS

Ref. No.	Description	Material	Qty
1	Body	Lead-Free Brass, C46400	1
2	Cylinder	Copper C12200	1
3	Piston	PP+30% Fiber	1
4	O-Ring	EPDM	2

DIMENSIONS (INCHES)

Size	Fig. 10P			Fig. 11P		
	A	B (NPT)	C	A	B	C
1/2	4.75	1/2-14	0.63	4.96	0.625	0.72
3/4	5.37	3/4-14	0.65	5.57	0.875	0.80
1	6.70	1-1-1/2	0.74	6.85	1.125	0.98
1-1/4	8.20	1-1/4-11-1/2	0.88	8.30	1.375	1.10
1-1/2	9.40	1-1/2-11-1/2	0.94	—	—	—
2	9.40	2-11-1/2	0.94	—	—	—