



Air Conditioning & Heating



## PRODUCT SPECIFICATIONS



# ARUF

## 1½ TO 5 TON, MULTI-POSITION THREE-SPEED AIR HANDLER WITH GALVANIZED CABINET



The Goodman® ARUF Multi-Position Air Handler is suitable for use with refrigerants R-410A and R-22. This unit features a check flowrater expansion device and may be installed in a variety of locations.

### Standard Features

- Suitable for use with refrigerants R-410A and R-22
- Check flowrater expansion device for cooling-only and heat pump applications
- Direct-drive, multi-speed motor
- Transformer and blower time-delay on all units
- ARI Certified
- ETL Listed

### Accessories

- 3 kW to 21 kW electric heat kits available as field-installed options
- Permanent washable plastic air filters
- Thermal Expansion Valve Kits for air conditioning-only applications
- Coil Insulation Kits for downflow applications
- Horizontal drain pan insulation kits

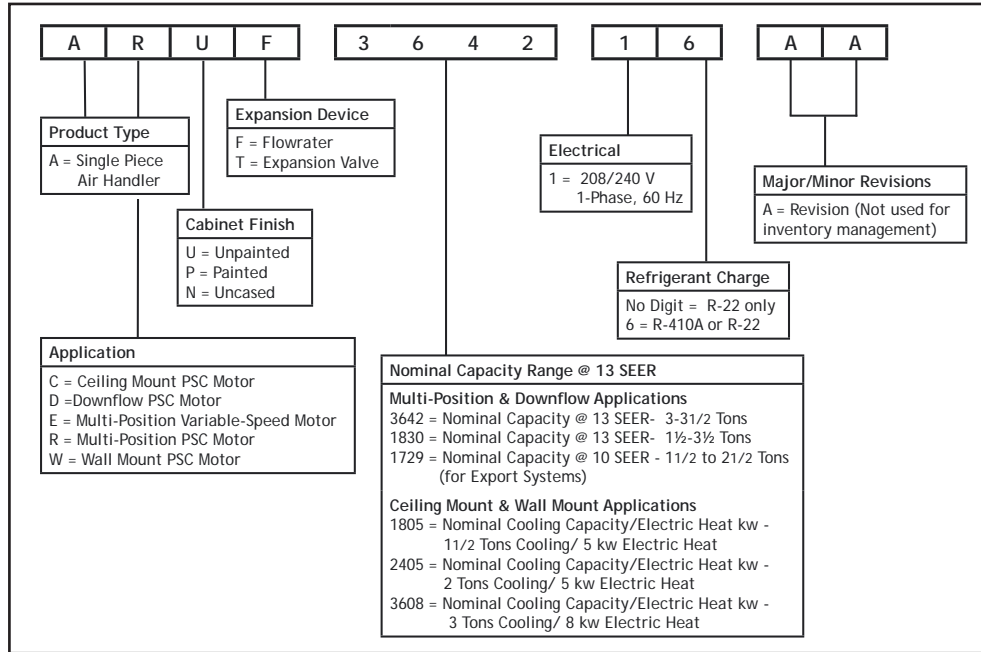
### Cabinet Features

- Rust-resistant, fully insulated steel cabinet
- Galvanized, stucco-embossed finish
- Attractive Architectural Gray painted front panels
- Built-in coil has horizontal, vertical and downflow drain pans with secondary drain connections
- Built-in filter rack for 1" filter (filter not included)
- Power supply entry at top; low-voltage entry on left side and top

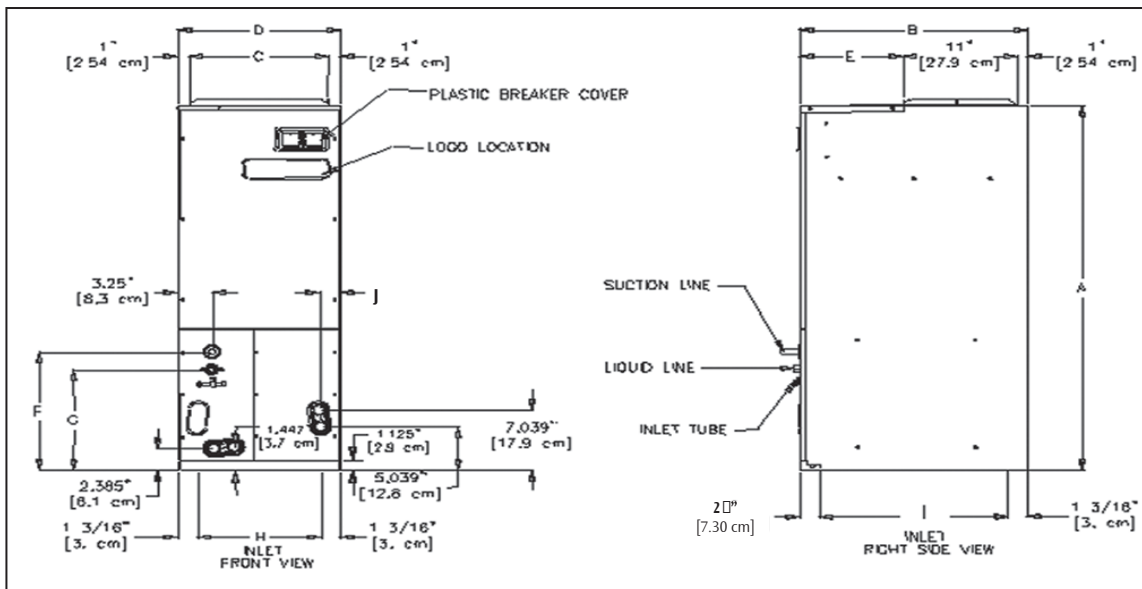


# PRODUCT SPECIFICATIONS

## NOMENCLATURE



## DIMENSIONS



Model	A	B	C	D	E	F	G	H	I	J
ARUF17291*	42 <sup>1</sup> / <sub>8</sub> "	22"	13 <sup>1</sup> / <sub>2</sub> "	15 <sup>1</sup> / <sub>2</sub> "	10"	14 <sup>1</sup> / <sub>2</sub> "	11 <sup>15</sup> / <sub>16</sub> "	13 <sup>1</sup> / <sub>8</sub> "	17 <sup>15</sup> / <sub>16</sub> "	2"
ARUF18241*	42 <sup>1</sup> / <sub>8</sub> "	22"	13 <sup>1</sup> / <sub>2</sub> "	15 <sup>1</sup> / <sub>2</sub> "	10"	14 <sup>1</sup> / <sub>2</sub> "	11 <sup>15</sup> / <sub>16</sub> "	13 <sup>1</sup> / <sub>8</sub> "	17 <sup>15</sup> / <sub>16</sub> "	2"
ARUF19311*	46 <sup>3</sup> / <sub>4</sub> "	22"	17 <sup>1</sup> / <sub>2</sub> "	19 <sup>1</sup> / <sub>2</sub> "	10"	14 <sup>1</sup> / <sub>2</sub> "	11 <sup>15</sup> / <sub>16</sub> "	17 <sup>1</sup> / <sub>8</sub> "	17 <sup>15</sup> / <sub>16</sub> "	2"
ARUF30301*	46 <sup>3</sup> / <sub>4</sub> "	22"	17 <sup>1</sup> / <sub>2</sub> "	19 <sup>1</sup> / <sub>2</sub> "	10"	14 <sup>1</sup> / <sub>2</sub> "	11 <sup>15</sup> / <sub>16</sub> "	17 <sup>1</sup> / <sub>8</sub> "	17 <sup>15</sup> / <sub>16</sub> "	2"
ARUF36361*	46 <sup>3</sup> / <sub>4</sub> "	22"	17 <sup>1</sup> / <sub>2</sub> "	19 <sup>1</sup> / <sub>2</sub> "	10"	14 <sup>1</sup> / <sub>2</sub> "	11 <sup>15</sup> / <sub>16</sub> "	17 <sup>1</sup> / <sub>8</sub> "	17 <sup>15</sup> / <sub>16</sub> "	1 <sup>4</sup> / <sub>5</sub> "
ARUF36421*	53 <sup>1</sup> / <sub>4</sub> "	24"	20"	22"	12"	14 <sup>1</sup> / <sub>2</sub> "	11 <sup>15</sup> / <sub>16</sub> "	19 <sup>5</sup> / <sub>8</sub> "	19 <sup>15</sup> / <sub>16</sub> "	1 <sup>4</sup> / <sub>5</sub> "
ARUF37431*	53 <sup>1</sup> / <sub>4</sub> "	24"	20"	22"	12"	14 <sup>1</sup> / <sub>2</sub> "	11 <sup>15</sup> / <sub>16</sub> "	19 <sup>5</sup> / <sub>8</sub> "	19 <sup>15</sup> / <sub>16</sub> "	1 <sup>4</sup> / <sub>5</sub> "
ARUF48601*	53 <sup>1</sup> / <sub>4</sub> "	24"	20"	22"	12"	14 <sup>1</sup> / <sub>2</sub> "	11 <sup>15</sup> / <sub>16</sub> "	19 <sup>5</sup> / <sub>8</sub> "	19 <sup>15</sup> / <sub>16</sub> "	1 <sup>4</sup> / <sub>5</sub> "

**SPECIFICATIONS**

	ARUF 172916	ARUF 182416	ARUF 193116	ARUF 303016	ARUF 363616	ARUF 364216	ARUF 374316	ARUF 486016
<b>Blower</b>								
Diameter	9½"	9½"	9½"	9½"	9½"	10⅝"	11 <sup>15</sup> / <sub>16</sub> "	10⅝"
Width	6"	6"	6"	8"	6"	8"	10 <sup>11</sup> / <sub>16</sub> "	10⅝"
Coil Drain Connect FPT	¾"	¾"	¾"	¾"	¾"	¾"	¾"	¾"
<b>Service Valve</b>								
Liquid	⅜"	⅜"	⅜"	⅜"	⅜"	⅜"	⅜"	⅜"
Suction	¾"	¾"	⅞"	¾"	¾"	⅞"	⅞"	⅞"
<b>Electrical Data</b>								
Voltage	208/ 240	208/ 240	208/ 240	208/ 240	208/ 240	208/ 240	208/ 240	208/ 240
Min Circuit Ampacity	2.1/ 2.1	2.1/ 2.1	1.9/ 1.9	3.3/ 3.3	3.3/ 3.3	3.7/ 3.7	4.2/ 4.2	5.4/ 5.4
Max. Overcurrent Device (amps)	15/ 15	15/ 15	15/ 15	15/ 15	15/ 15	15/ 15	15/ 15	15/ 15
Min. / Max VAC	197/ 253	197/ 253	197/ 253	197/ 253	197/ 253	197/ 253	197/ 253	197/ 253
Blower Motor FLA/ HP	1.7/ ⅓	1.7/ ⅓	1.48/ ¼	2.64/ ⅓	2.64/ ⅓	2.95/ ½	3.39/ ½	4.3/ ¾
<b>Ship Weight (lbs)</b>	110	120	155	144	164	173	195	192

\* Maximum Overcurrent Protection Device

**BLOWER PERFORMANCE**

Model	Motor Speed	CFM delivered against External Static Pressure				
		0.1"	0.2"	0.3"	0.4"	0.5"
ARUF172916	High	1,155	1,090	1,025	950	895
	Med	875	830	790	750	715
	Low	640	610	570	535	490
ARUF182416	High	1,155	1,090	1,025	950	895
	Med	875	830	790	750	715
	Low	640	610	570	535	490
ARUF193116	High	1,135	1,085	1,025	965	915
	Med	860	825	780	750	680
	Low	600	570	545	500	465
ARUF303016	High	1,455	1,385	1,330	1,205	1,090
	Med	1,340	1,290	1,230	1,140	1,050
	Low	1,075	1,030	980	910	840
ARUF363616	High	1,345	1,290	1,230	1,150	1,070
	Med	1,270	1,210	1,140	1,075	980
	Low	1,045	1,005	955	885	805
ARUF364216	High	1,700	1,680	1,645	1,610	1,535
	Med	1,500	1,480	1,440	1,380	1,325
	Low	1,345	1,320	1,275	1,230	1,195
ARUF374316	High	2,065	2,000	1,925	1,860	1,780
	Med	1,685	1,635	1,550	1,470	1,410
	Low	1,490	1,425	1,345	1,280	1,205
ARUF486016	High	2,135	2,080	1,985	1,900	1,805
	Med	1,975	1,935	1,875	1,775	1,675
	Low	1,715	1,670	1,650	1,590	1,530

**Note:** Assumes dry coil with filter in place; SCFM correction for wet coil = 4%

# PRODUCT SPECIFICATIONS

## ACCESSORIES

### HEAT KIT APPLICATIONS

	ARUF 172916	ARUF 182416	ARUF 193116	ARUF 303016	ARUF 363616	ARUF 364216	ARUF 374316	ARUF 486016
HKR-03*	X	X	X	X	X	X	X	X
HKR-05*, HKR-05C*	X	X	X	X	X	X	X	X
HKR-06*	X	X	X	X	X	X	X	X
HKR-08*, HKR-08C*	X <sup>1</sup>	X <sup>1</sup>	X <sup>1</sup>	X	X	X	X	X
HKR-10*, HKR-10C*	X <sup>1</sup>	X <sup>1</sup>	X <sup>1</sup>	X <sup>1</sup>	X	X	X	X
HKR-15C*	X <sup>2</sup>	X <sup>2</sup>	X <sup>2</sup>	X <sup>2</sup>	X <sup>2</sup>	X <sup>3</sup>	X <sup>3</sup>	X
HKR-20C*				X <sup>2</sup>		X <sup>3</sup>	X <sup>3</sup>	X
HKR-21C*				X <sup>2</sup>		X <sup>3</sup>	X <sup>3</sup>	X
^ HKR3-15*				X <sup>2</sup>	X <sup>2</sup>	X <sup>3</sup>	X <sup>3</sup>	X
^ HKR3-20*				X <sup>2</sup>		X <sup>3</sup>	X <sup>3</sup>	X

\* Revision level that may or may not be designated

C Circuit breaker option

^ Heat kit requires three-phase power supply

<sup>1</sup> Air handler must either be on medium or high speed

<sup>2</sup> Air handler must be on high speed

<sup>3</sup> For static pressure of 0.6 or higher, air handler must be on medium or high speed

### EXPANSION VALVE KITS FOR AIR CONDITIONING AND HEAT PUMP APPLICATIONS

Kit Number	Description	Application	Refrigerant	Tonnage: Outdoor Unit
XVB18-36C	20% Bleed Valve	AC Only	R-22	1½ - 3 Ton
XVB42-60C	20% Bleed Valve	AC Only	R-22	3½ - 5 Ton
XV18-36C	Non-bleed Valve	AC Only	R-22	1½ - 3 Ton
XV42-60C	Non-bleed Valve	AC Only	R-22	3½ - 5 Ton
TX2N2	Non-bleed Valve	AC or HP	R-22	1½ - 2 Ton
TX3N2	Non-bleed Valve	AC or HP	R-22	2½ - 3 Ton
TX5N2	Non-bleed Valve	AC or HP	R-22	3½ - 5 Ton
TX2N4	Non-bleed Valve	AC or HP	R-410A	1½ - 2 Ton
TX3N4	Non-bleed Valve	AC or HP	R-410A	2½ - 3 Ton
TX5N4	Non-bleed Valve	AC or HP	R-410A	3½ - 5 Ton

### DRAIN PAN INSULATION KIT FOR DOWNFLOW APPLICATIONS

Chassis Size	Insulation Kit
Small (15½")	DPI18-30/20
Medium (19½")	DPI36-42/20
Large (22")	DPI48-60/20

Note: Each kit contains enough material to modify 20 coils

### FILTERS

Model	Filter #	Qty Required
1729/ 1824	FIL 18-32	1
1931	FIL-36-42	1
3030/ 3636	FIL-36-42	1
3642/ 3743	FIL 48-61	1
4860	FIL 48-61	1



Goodman Manufacturing Company, L.P., reserves the right to discontinue, or change at any time, specifications or designs without notice or without incurring obligations.

Copyright © 2007 • Goodman Manufacturing Company, L.P. • Houston, Texas • Printed in the USA.