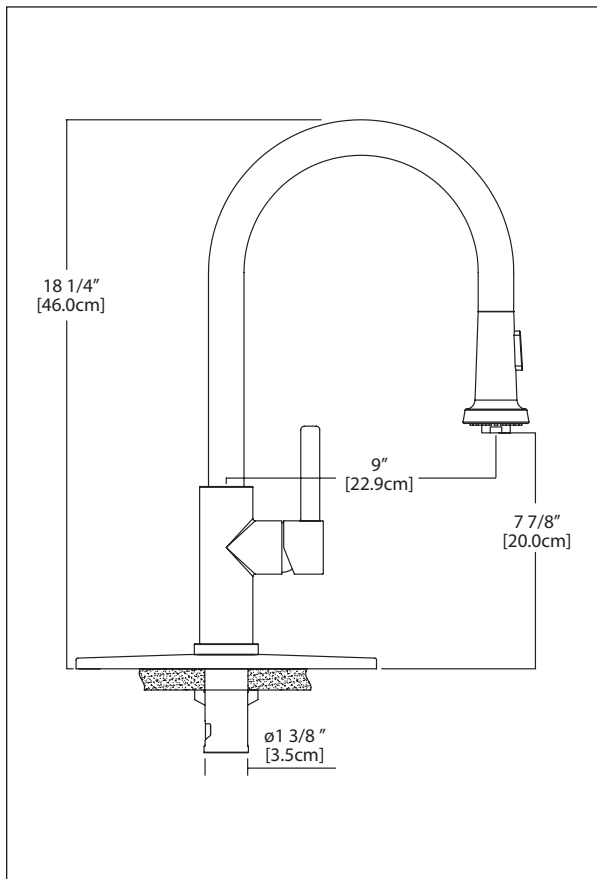




Installation Instructions for Kindred Faucet KF10J Pull Down Stainless Steel Faucet



Technical Data

Maximum water pressure: 115 psi
Recommended water pressure: 30 to 60 psi
Flow rate: 1.75 GPM @ 60psi

Maximum hot water temperature: 158°F
Recommended hole size: 1 3/8" to 1 1/2"

Congratulations on your selection of a Kindred faucet.

We are proud to offer this exclusive line of imported faucets that have been manufactured to Kindred specifications. We know that you will get many years of pleasure and trouble free service from this product.

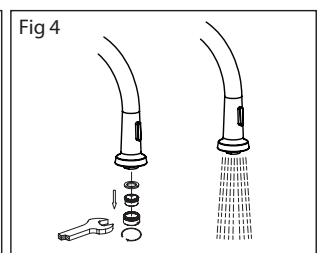
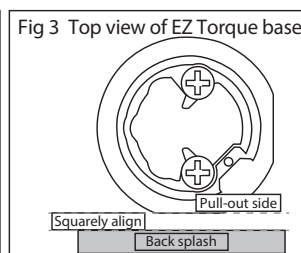
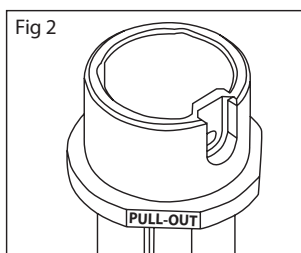
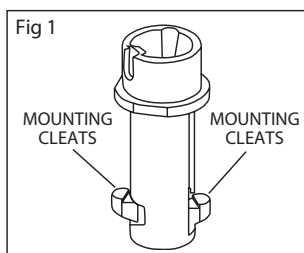
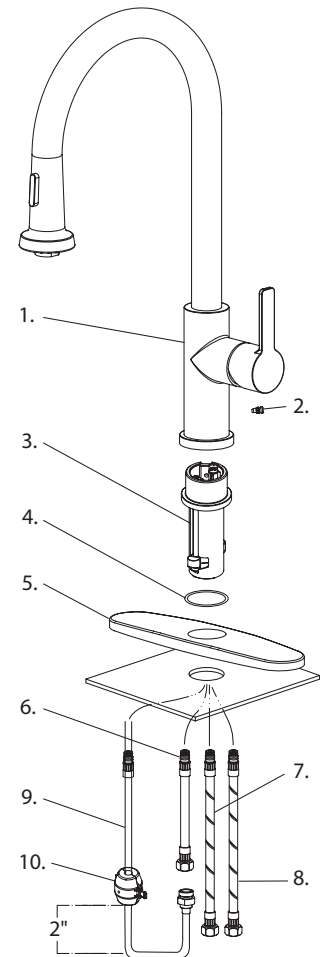
- **Please read our instructions before you install the faucet and before you start to use the faucet.**
- These instructions contain additional information regarding product use and care, as well as warranty particulars. **Please leave this leaflet with the homeowner after installation.**

KF10J Box Contents

- Faucet assembly
- Supply hoses
- Allen wrench
- Clip on weight
- Base plate
- Base plate gasket
- Spray hose

KF10J Installation

1. Remove all contents from the package and check for completeness.
2. Turn off water supply.
3. Remove faucet (1) and hardware from its protective packaging – faucet comes assembled.
4. Cut mounting hole 1 3/8" - 1 1/2" in diameter (35mm - 38mm) in the desired position (if one isn't available).
5. Remove set screw (2) from faucet body (1) and sit aside for later. Place a soft cloth in the sink or on the countertop to sit the faucet (1) on during the installation to protect it from scratches.
6. Separate the EZ Torque base (3) from the faucet body (1) and slide it several inches down the attached supply hoses (6, 7, 8, 9).
7. Insert supply hoses (6, 7, 8, 9) and EZ Torque base (3) into desired mounting location hole and lay faucet to side on soft cloth. If your application has 3 holes to cover, sit base plate gasket and base plate (5) over the holes. If your application is a single hole, the base plate and gasket (5) are optional.
8. Make sure the rubber o-ring (4) is in the groove at the bottom of the EZ Torque base (3). You may have to loosen the phillips screws at the top of the EZ Torque base (3) until the mounting cleats are free which will allow them to tuck inside the EZ Torque base (3) for installation. (See Fig 1).
9. Make sure the flat side of the EZ Torque base (3) that is labeled "PULL-OUT" (See Fig 2) is facing squarely towards the backsplash behind your sink, or where you intend to mount the faucet (See Fig 3). This should allow you to align the EZ Torque base (3) properly so the faucet spout and handles are pointed in the right direction after installed. If you are unsure, slide the faucet body (1) onto the EZ Torque base (3) to confirm if the spout and handles are aligned properly before you tighten the screws.
10. Tighten 2 mounting screws in the EZ Torque base (3) with phillips screwdriver to secure the base to the mounting surface. This will take several turns. If you decide to use a power drill, it is recommended to apply final torque by hand, not with the drill, to avoid damaging the screws.
11. Slide faucet body (1) onto the EZ Torque base (3), align the screw hole in the faucet body (1) with the hole in the EZ Torque base (3), and install and tighten the set screw (2) to secure the faucet body (1) to the EZ Torque base (3).
12. Connect the spray hose (9) to the spray supply hose (6) connected to the faucet body (1).
13. Attach the clip-on weight (10) to the spray hose (9) approximately 2" above the bend in the bottom of the spray hose.
14. Connect the supply hoses (7 & 8) to the water supply in the home.
15. Remove aerator using a 22mm wrench, turn on water and flush the faucet for any debris. Check for leaks and reinstall aerator. (See fig 4).



KF10J Standard Maintenance & Troubleshooting

Replacing the Cartridge

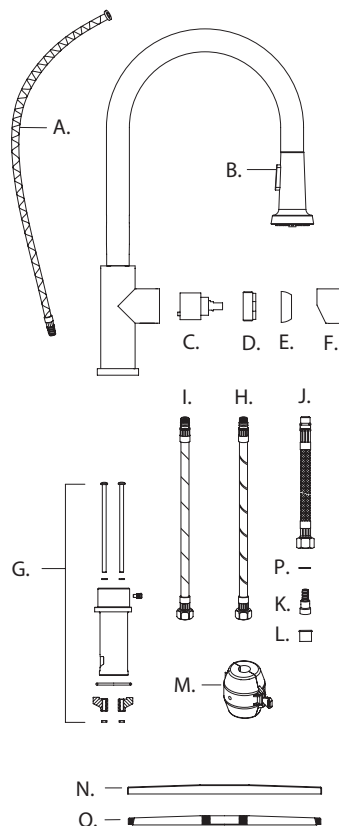
1. Shut off the water supply to the faucet.
2. Turn on the faucet briefly to relieve any pressure inside the faucet.
3. Move the faucet handle to the "OFF" position.
4. Remove set screw from handle using an allen key.
5. Pull the lever handle F from the faucet body.
6. Unscrew the cartridge cap E.
7. Unscrew the cartridge nut D.
8. Lift ceramic disk cartridge C from the body and replace it with new cartridge.
Ensure the 2 lugs on the bottom of the cartridge sit properly in the locating holes in the faucet body.
9. Re-assemble faucet in reverse order.
10. Test for leakage.

General Maintenance

- Clean aerator periodically for any buildup.
- Do not use harsh detergents, solvents, chemical agents, especially any containing CHLORINE, or metallic sponges as these can damage the surface finish.
- Clean only with soft sponge and soapy water.
- **ATTENTION! For outdoor installation product must be protected from freezing temperatures.** Disconnect hot and cold supply hoses from home, open the handle to drain out all water. Cover faucet with protective covering to keep warm.

Spare/Replacement List

- | | | |
|----|---------|--------------------------------|
| A. | F205501 | Spray Hose Assembly |
| B. | F206501 | Spray Head Assembly |
| C. | F206502 | Cartridge |
| D. | F3412 | Cartridge Nut |
| E. | F205506 | Cartridge Cap |
| F. | K206503 | Handle Assembly |
| G. | F205508 | EZ Torque Mounting Kit |
| H. | F205509 | Hot Supply Hose |
| I. | F205510 | Cold Supply Hose |
| J. | F205511 | Spray Supply Hose |
| K. | F205512 | Check Valve Holder with Washer |
| L. | F205513 | Check Valve |
| M. | F205514 | Clip on Weight |
| N. | F205515 | Base Plate |
| O. | F205516 | Base Plate Gasket |
| P. | F205518 | Flat Washer |



Kindred Faucets

Lifetime Limited Buyer Warranty

This Kindred faucet installed in a private residence will carry a limited lifetime warranty on all mechanical parts to be free of manufacturing defects in material and workmanship under normal usage. This faucet is also warranted for outdoor installations for a period of five (5) years from the original date of purchase. All chrome finishes carry a limited lifetime warranty; all other finishes are warranted for five (5) years from the original date of purchase. This warranty applies only to the original owner, providing the product has been installed in accordance with our installation instructions, used as recommended and in a normal residential application. In the event of a warranty claim, the owner will be required to provide proof of purchase - save sales receipt. This warranty covers all components which make the product operational. Franke Kindred Canada, at its option, may repair or replace the product or components necessary to restore the product to good working condition. We reserves the right to inspect the installation prior to the actual replacement of the product or component part. This warranty does not cover misuse or abuse, accidental damages, scuffs or scratches, improper installation, abnormal usage, negligence or damage caused by improper maintenance or cleaning. Normal wear of parts is excluded from the warranty. Damage caused by impurities or acts beyond our control are not covered. Any product or part which has been repaired or altered in any manner outside of our factory, unless previously authorized in writing by Franke Kindred Canada, will void the warranty. Any replacement excludes transportation and any labour re-installation costs. This warranty does not allow recovery of incidental or consequential damages such as loss of use, delay, property damage or other consequential damage, and Franke Kindred Canada accepts no liability for such damages. Our warranty is limited to the above conditions and to the warranty period specified herein and is exclusive. Franke Kindred Canada DISCLAIMS all other warranties, expressed or implied, including IMPLIED WARRANTIES OF MERCHANTABILITY AND/OR FITNESS FOR A PARTICULAR PURPOSE. This warranty gives specific legal rights, and you may also have other rights which vary from province to province or state to state.

For any further information about our products, about the installation of them or about the guarantee, please contact the customer service department at:

Franke Kindred Canada Limited
Customer Service Department
P.O. Box 190, 1000 Franke Kindred Road
Midland, Ontario Canada L4R 4K9

Telephone: 1-866-687-7465
Fax: 1-800-361-8408
E-mail: info@kindred-sinkware.com
www.kindredcanada.com

Monday to Thursday - 8:00 am to 5:00 pm
Friday - 8:00 am to 3:30 pm
Eastern Standard Time