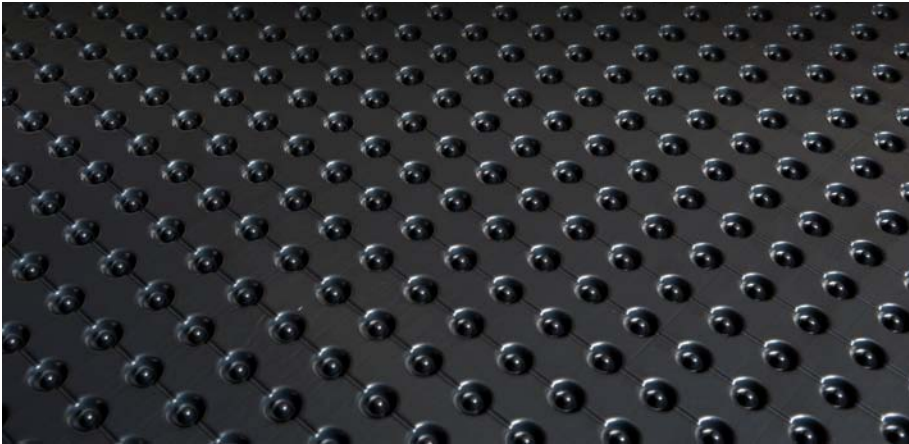


DRAINAGE SOLUTIONS AND WATER TREATMENT / PLATON

INSTALLING PLATON AS A SUBFLOOR





In homes, laminate flooring and its underpad can be placed directly over Platon as a floating floor. For other floor finishes, plywood or OSB sheets (11mm or 7/16" minimum thickness) are laid as a secured subfloor over the Platon and fastened to the concrete floor with concrete screws or masonry nails.

MATERIAL REQUIREMENTS

Platon Membrane

- When planning to install Platon as a subfloor, deduct 3.66m² (12ft²) from roll size as joint overlap

Additional Materials

- "House-wrap" tape, or caulk
- For plywood or OSB, use concrete screws or masonry nails to secure it to the concrete

Hint: For masonry nails, drill a hole the same depth and diameter as the nail, insert wire plumber's solder, and drive the nail beside the solder at least 2.5cm (1") into the concrete

STEP 1

Prepare

Remove existing floor covering. Ensure the concrete is clear of debris. Level low areas with floor leveling compound if required.



STEP 2

Roll Out

Roll out the first strip of Platon, dimples facing down, flat tab away from the wall, and cut to length. Cut the flat tab off of the first strip rolled out only.

Reverse-roll the Platon if it curls excessively.

Install laminate flooring and its underpad over each strip as it is rolled out and cut to length.



STEP 3

Overlap And Tape

Unroll the next section with the flat tab overlapping the first section and cut to length. Apply butyl rubber caulk or foam panel adhesive between the flat tab and adjacent section or use “house-wrap” tape to seal the overlap. At end of roll joints, mesh four rows of dimples, caulk and tape.



STEP 4

Install a Secured Subfloor (if necessary)

For floor finishes other than laminate, cover the Platon with plywood or OSB sheets (minimum 11mm or 7/16”).

Fasten through the subfloor and Platon 25mm (1”) into the concrete where there is vertical movement. The 122cm (4’) joints between adjacent 122cm x 244cm (4’ x 8’) sheets should be staggered. Leave 6mm (1/4”) clearance around the perimeter of the subfloor to allow for expansion. Non-load-bearing walls may now be framed on the subfloor.



STEP 5

Install Floor Covering

Follow the floor manufacturer’s installation recommendations. Additional instructions specific to Platon are as follows:

Laminate

Laminate flooring and its underpad may be installed directly over Platon. The concrete must be level. Landscape fabric may be placed on the concrete to improve sound characteristics if the concrete is slightly uneven. For commercial use and point loads exceeding 800lbs/in², the laminate should be installed over a secured subfloor.

Carpet

Install over a minimum of 11mm (7/16”) secured subfloor.

Hardwood

If the flooring is to be nailed down, use 19mm (3/4”) OSB and short nails, or two layers of subflooring (totaling 25mm [1”] or more) to avoid puncturing the Platon.

Vinyl

Glue and staple 6mm (1/4”) underlay (as recommended by the flooring manufacturer) over the secured subfloor. Stagger the joints between the underlay and the subfloor.



NOTE

- Installation instructions are to be used as a guide only
- No recommendations are to be interpreted as superseding or replacing any installation recommendations of the flooring manufacturer
- No warranty on the performance of the floor covering is given or implied

Platon Underlayment on Armtec.com



Armtec is a leading Canadian infrastructure and construction materials company combining creative engineered solutions, relevant advice, dedicated people, proven products and a national presence with a local focus on exceptional customer service.

1-877-5-ARMTEC | ARMTEC.COM