

# BOSHART INDUSTRIES

Telephone: 1-519-595-4444 - Toll Free: 1-800-561-3164

Fax: 1-519-595-4380 - [www.boshart.com](http://www.boshart.com)

## WTC SERIES BII WATERTITE WELL CAPS - FOR STEEL OR PVC WELL CASING

- Easy to install, easy access for maintenance
- Vermin proof with large screened air vents
- Greater clearance for submersible pump cable
- Stainless steel hardware
- O-ring system ensures reliable watertight seal between well casing and retainer ring
- A second O-ring is used to seal cover and retainer ring, a positive compression seal is achieved by tightening 4 bolts
- Grounding terminal with bolt provided
- A well log is provided inside each cap to record installation data/specifications



PART NO.	CASING SIZE (IN)		CONDUIT CONNECTION	AIR VENTS	UNIT WGT - lbs	QTY CASE
	I.D.	O.D.				
<b>ALUMINUM</b>						
WTC-A04	4"	4-1/2"	1" FPT	(2) 3/4"	3.00	16
WTC-A05	5"	5-9/16"	1" FPT	(2) 3/4"	3.25	12
WTC-A06	6"	6-5/8"	1" FPT	(2) 3/4"	4.00	12
WTC-A06-BLUE	6"	6-5/8"	1" FPT	(2) 3/4"	4.00	12
WTC-A06-12	6"	6-5/8"	1-1/4" FPT	(2) 3/4"	4.00	12
WTC-A06-12-BLUE	6"	6-5/8"	1-1/4" FPT	(2) 3/4"	4.00	12
WTC-PA06 *	6"	6-5/8"	1" FPT	(2) 3/4"	2.50	12
<b>CAST IRON</b> - Durable Blue Powder Coat Paint						
WTC-C06	6"	6-5/8"	1" FPT	(2) 3/4"	9.5	6
WTC-C06-12	6"	6-5/8"	1-1/4" FPT	(2) 3/4"	9.5	6

8, 10 and 12" available in locking style only, see WTCL series, Page 11-6



WTC Series



WTC-A06-BLUE  
(Durable Powder Coat Paint)



\*WTC-PA06  
(PVC cover c/w Alum. lower ring for steel casing)



WTC-C06  
(Durable Powder Coat Paint)

## WTC-G SERIES BII WATERTITE CAPS FOR PVC WELL CASING

- Same design as the above WTC Series but with exception that the lower ring is plastic which can be solvent welded directly to PVC well casing
- Durable UV stabilized, high impact ABS



PART NO.	CASING SIZE (IN)		CONDUIT CONNECTION	AIR VENTS	UNIT WGT - lbs	QTY CASE
	I.D.	O.D.				
WTC-G-P0625-06 *	6" or 6-1/4"	6-5/8" or 6.9"	1" FPT	(2) 3/4"	1.93	12
WTC-G-P0625	6-1/4"	6.90"	1" FPT	(2) 3/4"	1.75	12
WTC-G-AP0625-06 *	6" or 6-1/4"	6-5/8" or 6.9"	1" FPT	(2) 3/4"	2.93	12
WTC-G-AP0625-06-B	6" or 6-1/4"	6-5/8" or 6.9"	1" FPT	(2) 3/4"	2.93	12
WTC-G-AP0625	6-1/4"	6.90"	1" FPT	(2) 3/4"	2.75	12

\* New models of well caps for 6-5/8" well casing are now available. These caps are the 6-1/4" well caps for 6.9" O.D. casing shipped with a Part No. WCCA-G0625-G06 6.9" X 6-5/8" well cap casing adapter included. The reducing adapter is not glued into the well cap so that the end user has the flexibility to use the cap for either a 6.9" O.D. or a 6-5/8" O.D. casing. This also gives the option to reduce inventories for those customers whom have both casing sizes in their territory, ensuring they never end up at a job site with the wrong size well cap.



WTC-G-P0625  
ABS top with  
ABS glue-on  
lower ring



WTC-G-AP0625  
Aluminum top with  
ABS glue-on lower  
ring



WTC-G-P0625-06  
consists of  
WTC-G-P0625 well cap  
plus a  
WCCA-G0625-G06 ring  
WTC-G-AP0625

### WELL CAP CASING ADAPTER

PART NO.	SIZE	UNIT WGT-lbs	QTY CASE
WCCA-G0625-G06	6.9" X 6-5/8"	0.175	1

Well cap casing adapters (reducer rings) can be purchased separately if desired. If an account would prefer the option of stocking the 6-1/4" well caps for 6.9" O.D. well casing and selling the rings as a separate component. The rings are individually bagged and include installation information.



WCCA-G0625-G06 ring  
glued on a 6-5/8"  
casing

# BOSHART INDUSTRIES

Telephone: 1-519-595-4444 - Toll Free: 1-800-561-3164

Fax: 1-519-595-4380 - [www.boshart.com](http://www.boshart.com)

## WTMLC SERIES BII LOCKING WATERTITE WELL CAPS - FOR STEEL OR PVC WELL CASING

### ALUMINUM WATERTITE LOCKING CAPS

- Easy to install, easy access for maintenance
- Vermin proof with large screened air vents
- Stainless steel hardware
- O-ring system to ensure reliable seal to casing
- A second O-ring is used to seal cover and retainer ring, a positive compression seal is achieved by tightening a single set screw on a specially designed tapered surface ensuring a positive seal
- Locking feature provides a secure/tamper-proof installation
- Grounding terminal with bolt provided
- A well log is provided inside each cap to record installation data/specifications



Note:  
Locks not included.  
For illustration  
purposes only.

PART NO.	CASING SIZE (IN)		CONDUIT CONNECTION	AIR VENTS	UNIT WGT - lbs	QTY CASE
	I.D.	O.D.				
WTMLC-A04	4"	4-1/2"	1" FPT	(2) 3/4"	3.26	20
WTMLC-A045	4-1/2"	5"	1" FPT	(2) 3/4"	3.55	16
WTMLC-A045-BLUE	4-1/2"	5"	1" FPT	(2) 3/4"	3.55	16
WTMLC-A05	5"	5-9/16"	1" FPT	(2) 3/4"	3.70	16
WTMLC-A05-BLUE	5"	5-9/16"	1" FPT	(2) 3/4"	3.70	16
WTMLC-A056-BLUE	5-5/8"	6"	1" FPT	(2) 3/4"	3.92	16
WTMLC-A06	6"	6-5/8"	1" FPT	(2) 3/4"	3.95	12
WTMLC-A06-BLUE	6"	6-5/8"	1" FPT	(2) 3/4"	3.95	12
WTMLC-A06-12	6"	6-5/8"	1-1/4" FPT	(2) 3/4"	3.95	12
WTMLC-A066	6-5/8"	7"	1" FPT	(2) 3/4"	3.53	12

## WTMLC-G SERIES BII LOCKING WATERTITE WELL CAPS - FOR STEEL OR PVC WELL CASING

### LOCKING CAPS - ALUMINUM COVER WITH GLUE-ON ABS RING



PART NO.	CASING SIZE (IN)		CONDUIT CONNECTION	AIR VENTS	UNIT WGT - lbs	QTY CASE
	I.D.	O.D.				
WTMLC-G-AP04	4"	4.500"	1" FPT	(2) 3/4"	2.03	20
WTMLC-G-AP045	4-1/2"	4.950"	1" FPT	(2) 3/4"	2.18	16
WTMLC-G-AP05	5"	5.563"	1" FPT	(2) 3/4"	2.36	16
WTMLC-G-AP0625-06 *	6" or 6-1/4"	6-5/8" or 6.9"	1" FPT	(2) 3/4"	2.58	12
WTMLC-G-AP0625	6-1/4"	6.900"	1" FPT	(2) 3/4"	2.40	12

\* A well cap for 6-5/8" well casing is now available. These caps are the 6-1/4" well caps for 6.9" O.D. casing shipped with a Part No. WCCA-G0625-G06 6.9" X 6-5/8" well cap casing adapter included. The reducing adapter is not glued into the well cap so that the end user has the flexibility to use the cap for either a 6.9" O.D. or a 6-5/8" O.D. casing. This also gives the option to reduce inventories for those customers whom have both casing sizes in their territory, ensuring they never end up at a job site with the wrong size well cap.



WTMLC-G-AP0625-06 consists of WTMLC-G-AP0625 well cap plus a WCCA-G0625-G06 ring

### WELL CAP CASING ADAPTER

PART NO	SIZE	UNIT WGT-lbs	QTY CASE
WCCA-G0625-G06	6.9" X 6-5/8"	0.175	1

Well cap casing adapters (reducer rings) can be purchased separately if desired. If an account would prefer the option of stocking the 6-1/4" well caps for 6.9" O.D. well casing and selling the rings as a separate component. The rings are individually bagged and include installation information.



WCCA-G0625-G06 ring glued on a 6-5/8" casing

# BOSHART INDUSTRIES

Telephone: 1-519-595-4444 - Toll Free: 1-800-561-3164

Fax: 1-519-595-4380 - [www.boshart.com](http://www.boshart.com)

## WTCC SERIES WATERTITE LOCKING CAPS - CAST IRON

- Rugged cast iron construction with durable blue powder coat paint finish
- Vermin Proof design c/w two large stainless steel screened vents
- Locking feature provides a secure / tamper proof installation
- Wide gasket provides a positive compression seal between the well casing and cap as well as the cap cover and retainer ring, compression is achieved by tightening 5 bolts
- Deep, forgiving pocket designed for sealing unevenly cut casing - gasket will seal as far as 1-1/2" from the top of the casing
- Increased clearance for the pump cable



PART NO.	CASING SIZE (IN)		CONDUIT CONNECTION	AIR VENTS	UNIT WGT - lbs	QUANTITY	
	I.D.	O.D.				CTN	CASE
WTCC-5-CI	5"	5-9/16"	1" FPT	(2) 3/4"	9.85	1	6
WTCC-6-CI	6" , 6-1/4"	6-5/8"	1" FPT	(1) 1/2"	10.5	1	6
WTCC-6-CI-12	6" , 6-1/4"	6-5/8"	1-1/4" FPT	(1) 1/2"	10.5	1	6
WTCC-66-CI	6-5/8"	7"	1-1/4" FPT	(2) 3/4"	11.18	1	6

## 8" , 10" , 12" WTCL SERIES BII WATERTITE LOCKING WELL CAPS

### ALUMINUM WATERTITE LOCKING CAPS

- Easy to install, easy access for maintenance
- Vermin proof with large screened air vents
- Stainless steel hardware
- O-ring system to ensure reliable seal to casing
- A second O-ring is used to seal cover and retainer ring, a positive compression seal is achieved by tightening 6 bolts
- Locking feature provides a secure/tamper-proof installation
- Grounding terminal with bolt provided
- A well log is provided inside each cap to record installation data/specifications



Note:  
Locks not included.  
For illustration purposes only.



PART NO.	CASING SIZE (IN)		CONDUIT CONNECTION	AIR VENTS	UNIT WGT - lbs	QTY CASE
	I.D.	O.D.				
WTCL-A08	8"	8-5/8"	1-1/4" FPT	(2) 3/4"	5.25	8
WTCL-A10	10"	10-3/4"	1-1/4" FPT	(2) 3/4"	6.00	5
WTCL-A12	12"	12-3/4"	1-1/4" FPT	(2) 3/4"	6.50	5

## PREMIUM WATERTIGHT CAST IRON LOCKING CAP - FOR STEEL OR PVC WELL CASING

- Absolutely the EASIEST & FASTEST heavy duty well cap to install, easy to access well for maintenance.
- Only tools required are (2) 9/16" wrenches, (1) 5/32" Allen Wrench.
- Three Piece Heavy Duty design, cast from high quality grey cast iron, with a durable blue powder coat paint, which is baked to ensure superior quality.
- All hardware is Stainless Steel for maximum corrosion resistance (No Plated Fasteners)
- Thick soft SBR rubber gasket ensures a positive watertight compression seal to the well casing, the cap has a deep socket to ensure the gasket seals down from the top edge of the well casing.
- Top cover is sealed to the lower assembly by compressing a soft, thick durable SBR gasket, cover can easily be removed without disturbing the seal to the well casing, or interfering with the wiring or conduit.
- Large 2" FPT conduit connection provides lots of room for heavy gauge submersible pump cables.
- Large 2" mushroom vent cap with SS screen is included to ensure the cap is Vermin Proof.
- Replacement of the vent with a standard 2" MPT thread plug quickly converts this vented well cap into a truly watertight cap where and when required.
- Caps are supplied with a ground bolt and two tongue ring terminal connectors. Three S.S. grounding set screws bond the well cap to the well casing (steel)
- Locking feature provides a secure / tamper proof design, simply insert a pad lock thru the S.S. locking pin.
- Personalization is available by means of an engraved aluminum plate which is affixed by drive rivets.

PART NO.	CASING SIZE (IN)		CONDUIT CONNECTION	AIR VENTS	UNIT WGT - lbs	QTY CASE
	I.D.	O.D.				
WTCL-C08	8"	8-5/8"	2" FPT	(1) 2" MVC	32.04	1

### CAST IRON WELL CAP VENT

- Heavy duty cast iron construction
- 60 mesh stainless steel screen
- 2" MPT thread with hole for cotter key
- Cotter key to lock vent in cap to ensure cap is tamper proof
- Durable blue powder coat paint finish

PART NO.	SIZE
WCV-20	2" MPT



# BOSHART INDUSTRIES

Telephone: 1-519-595-4444 - Toll Free: 1-800-561-3164

Fax: 1-519-595-4380 - [www.boshart.com](http://www.boshart.com)

## SEAL WELL PLASTIC WELL SEALS

- Allows for larger conduit cables and will have a consistent design for the entire line.
- Heavy duty construction, made from UV stabilized ABS material c/w soft 3/4" thick Buna N rubber gasket and zinc plated hardware.
- All seals complete with grommet kit which have both round and slotted gaskets for twisted or parallel pump cables, produced from very soft rubber which compresses easily when the conduit bushing is tightened.
- Option for a split well seals & stainless steel hardware available in all sizes
- To order split well seals, please add the letter S to the Part No.  
Example: To order the split version of WSP40, please order as WSP40S. Please contact your Sales Rep for pricing.
- To order seals with SS hardware, please add the letters -SH to the end of Part No.  
Example: For Part No. WSP4010, order as WSP4010-SH or WSP4010S-SH (split c/w SS bolts).



Please contact your Sales Rep for pricing.

## PLASTIC SUBMERSIBLE PUMP WELL SEALS - SINGLE HOLE

PART NO	WELL CASING I.D.	DROP PIPE SIZE	VENT SIZE	CONDUIT SIZE	WGT lbs	QTY CASE
WSP4010	4"	1"	1/2"	3/4"	1.476	16
WSP4012	4"	1-1/4"	1/2"	3/4"	1.402	16
WSP4015	4"	1-1/2"	1/2"	3/4"	1.375	16
WSP4020 *	4"	2"	1/2"	3/4"	1.126	16
WSP4210	4-1/4"	1"	1/2"	3/4"	1.506	16
WSP4212	4-1/4"	1-1/4"	1/2"	3/4"	1.440	16
WSP4215	4-1/4"	1-1/2"	1/2"	3/4"	1.405	16
WSP4220	4-1/4"	2"	1/2"	3/4"	1.156	16
WSP5010	5"	1"	1/2"	1"	2.154	8
WSP5012	5"	1-1/4"	1/2"	1"	2.098	8
WSP5015	5"	1-1/2"	1/2"	1"	2.028	8
WSP5020	5"	2"	1/2"	1"	1.898	8
WSP5210	5-1/4"	1"	1/2"	1"	2.200	8
WSP5212	5-1/4"	1-1/4"	1/2"	1"	2.144	8
WSP5215	5-1/4"	1-1/2"	1/2"	1"	2.074	8
WSP5220	5-1/4"	2"	1/2"	1"	1.944	8
WSP6010	6"	1"	1/2"	1"	2.788	8
WSP6012	6"	1-1/4"	1/2"	1"	2.690	8
WSP6015	6"	1-1/2"	1/2"	1"	2.688	8
WSP6020	6"	2"	1/2"	1"	2.484	8
WSP6210	6-1/4"	1"	1/2"	1"	2.854	8
WSP6212	6-1/4"	1-1/4"	1/2"	1"	2.756	8
WSP6215	6-1/4"	1-1/2"	1/2"	1"	2.754	8
WSP6220	6-1/4"	2"	1/2"	1"	2.550	8



Split Well Seal



4" x 2" with raised fitting supports



WSP6010, WSP6012, WSP6210 and WSP6212 are centre hole design.

\* Note: The 4" x 2" well seals have raised supports which the drop pipe fitting rests on, this keeps the fittings above the nuts and conduit bushing making it possible to incorporate a 3/4" cable hole which is larger than any other 4" x 2" on the market.

## PLASTIC JET PUMP WELL SEALS - DOUBLE HOLE

PART NO	WELL CASING I.D.	DROP PIPE SIZE	VENT SIZE	CONDUIT SIZE	WGT lbs	QTY CASE
WSP401210	4"	1-1/4" x 1"	1/2"	-	1.292	16
WSP421210	4-1/4"	1-1/4" x 1"	1/2"	-	1.322	16
WSP501210	5"	1-1/4" x 1"	1/2"	-	1.988	8
WSP521210	5-1/4"	1-1/4" x 1"	1/2"	-	2.034	8
WSP601210	6"	1-1/4" x 1"	1/2"	-	2.716	8
WSP601212	6"	1-1/4" x 1-1/4"	1/2"	-	2.372	8
WSP621210	6-1/4"	1-1/4" x 1"	1/2"	-	2.782	8
WSP621212	6-1/4"	1-1/4" x 1-1/4"	1/2"	-	2.438	8



## PLASTIC WELL SEALS - BLANK

PART NO	WELL CASING I.D.	DROP PIPE SIZE	VENT SIZE	CONDUIT SIZE	WGT lbs	QTY CASE
WSP40	4"	Blank	1/2"	3/4" (W/Plug)	1.566	16
WSP42	4-1/4"	Blank	1/2"	3/4" (W/Plug)	1.596	16
WSP50	5"	Blank	1/2"	1" (W/Plug)	2.230	8
WSP52	5-1/4"	Blank	1/2"	1" (W/Plug)	2.276	8
WSP60	6"	Blank	1/2"	1" (W/Plug)	2.886	8
WSP62	6-1/4"	Blank	1/2"	1" (W/Plug)	2.952	8



Seal Well Products® are manufactured on-site by Boshart Industries

# BOSHART INDUSTRIES

Telephone: 1-519-595-4444 - Toll Free: 1-800-561-3164

Fax: 1-519-595-4380 - [www.boshart.com](http://www.boshart.com)

## CAST IRON/STEEL WELL SEAL - DOUBLE HOLE - JET PUMP

PART NO	GROMMET KIT INCLUDED	WELL CASING I.D.	DROP PIPE SIZE	VENT SIZE	WGT lbs	QTY CASE
WS301007	No	3"	1" x 3/4"	1/4"	2	1
WSS351210 *	No	3-1/2"	1-1/4" x 1"	1/2"	3	16
WSS401010 *	No	4"	1" x 1"	1/2"	4	1
WS401210	No	4"	1-1/4" x 1"	1/2"	2-3/4	1
WS401212	No	4"	1-1/4" x 1-1/4"	1/2"	4	1
WS421210	No	4-1/4"	1-1/4" x 1"	1/2"	2-3/4	1
WS451210	No	4-1/2"	1-1/4" x 1"	1/2"	5	1
WS501210	No	5"	1-1/4" x 1"	1/2"	5	1
WSS501212 *	No	5"	1-1/4" x 1-1/4"	1/2"	6	1
WS521210	No	5-1/4"	1-1/4" x 1"	1/2"	5-1/4	1
WS551210	No	5-5/8"	1-1/4" x 1"	1/2"	7	6
WS601210	No	6"	1-1/4" x 1"	1/2"	7-3/4	1
WS601212	No	6"	1-1/4" x 1-1/4"	1/2"	7-1/2	1
WSS601512 *	No	6"	1-1/2" x 1-1/4"	1/2"	9	1
WS621210	No	6-1/4"	1-1/4" x 1"	1/2"	8	1
WS621212	No	6-1/4"	1-1/4" x 1-1/4"	1/2"	8	1
WSS621512 *	No	6-1/4"	1-1/2" x 1-1/4"	1/2"	9	6



Well Seal Modification available, please call for price and delivery

\* Seal is manufactured from steel plate - solid top plate design

## GROMMET KITS

PART NO	DESCRIPTION
WS-GK-07	3/4" Wire hole grommet kit
WS-GK-10	1" Wire hole grommet kit



## PVC WELL SEAL AIR VENT

- Eight 0.04" slits, four on each side

PART NO	DESCRIPTION	QUANTITY	
		BAG	CTN
WS-V05	1/2" MPT x 5" Length		500



## ZINC PLATED STEEL AIR VENT

- Fabricated from 1/2" zinc steel pipe
- 40 Mesh Stainless Steel vermin proof screen included
- Use for water well ventilation
- Approximate overall dimensions: Height= 12-7/8" x Width= 7-3/4"



PART NO.	SIZE	QTY
WS-V05-G	1/2"	40

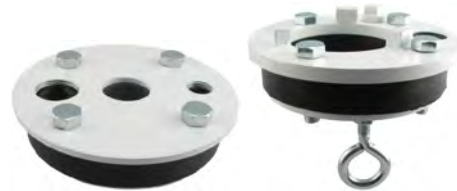
# BOSHART INDUSTRIES

Telephone: 1-519-595-4444 - Toll Free: 1-800-561-3164

Fax: 1-519-595-4380 - [www.boshart.com](http://www.boshart.com)

## BII™ STEEL SANITARY WELL SEALS

- Single drop pipe hole (submersible pump seal)
- Solid, high strength steel top & bottom plates made from A36 hot rolled steel
- Steel plates are powder coated for durable finish
- 6" series available in both standard and heavy duty
- 8", 10" & 12" seals are all heavy duty for deep sets
- Soft extra thick 1" rubber gaskets for positive sealing
- Zinc plated steel bolts
- Large pump cable / wire holes for easy installation
- Carefully designed to provide clearance for pump cable conduit, bolt heads and vents
- Individually boxed
- For the Eye Bolt option, add -EB to the end of the part no. and add \$4.62 to the List Price



PART NO.	NOMINAL SIZE	GASKET O.D.	FITS CASING I.D.	DROP PIPE SIZE	VENT SIZE	CONDUIT SIZE-FPT	TOP PLATE	MAX LOAD	QUANTITY CTN	QUANTITY CASE	WEIGHT EACH-LBS
WSS3510	3-1/2"	3.51"	3-1/2"	1"	1/2"	1/2"	1/2"	1	16		3.00
WSS4010	4"	3.95"	4" - 4-1/4"	1"	1/2"	3/4"	3/16	2100	1	12	2.00
WSS4012	4"	3.95"	4" - 4-1/4"	1-1/4"	1/2"	3/4"	3/16	2100	1	12	2.00
WSS4015	4"	3.95"	4" - 4-1/4"	1-1/2"	1/2"	3/4"	3/16	2100	1	12	2.00
WSS4020 *	4"	3.95"	4" - 4-1/4"	2"	1/2"	3/4"	3/16	2100	1	12	2.00
WSS5010	5"	4.95"	5" - 5-1/4"	1"	1/2"	1"	3/16	1500	1	12	2.75
WSS5012	5"	4.95"	5" - 5-1/4"	1-1/4"	1/2"	1"	3/16	1500	1	12	2.75
WSS5015	5"	4.95"	5" - 5-1/4"	1-1/2"	1/2"	1"	3/16	1500	1	12	2.75
WSS5020	5"	4.95"	5" - 5-1/4"	2"	1/2"	1"	3/16	1500	1	12	2.75
WSS6010	6"	5.95"	6" - 6-1/4"	1"	1/2"	1"	3/16	1100	1	8	4.00
WSS6012	6"	5.95"	6" - 6-1/4"	1-1/4"	1/2"	1"	3/16	1100	1	8	4.00
WSS6015	6"	5.95"	6" - 6-1/4"	1-1/2"	1/2"	1"	3/16	1100	1	8	4.00
WSS6020	6"	5.95"	6" - 6-1/4"	2"	1/2"	1"	3/16	1100	1	8	4.00
WSS6010HD	6"	5.95"	6" - 6-1/4"	1"	1/2"	1"	3/8	9000	1	8	4.00
WSS6012HD	6"	5.95"	6" - 6-1/4"	1-1/4"	1/2"	1"	3/8	9000	1	8	4.00
WSS6015HD	6"	5.95"	6" - 6-1/4"	1-1/2"	1/2"	1"	3/8	9000	1	8	4.00
WSS6020HD	6"	5.95"	6" - 6-1/4"	2"	1/2"	1"	3/8	9000	1	8	4.00
WSS6030HD *	6"	5.95"	6" - 6-1/4"	3"			3/8	9000	1	8	4.00
WSS6210	6-1/4"	6.20"	6-1/4"	1"	1/2"	1"	3/16	1100	1	8	4.00
WSS6212	6-1/4"	6.20"	6-1/4"	1-1/4"	1/2"	1"	3/16	1100	1	8	4.00
WSS6215	6-1/4"	6.20"	6-1/4"	1-1/2"	1/2"	1"	3/16	1100	1	8	4.00
WSS6220	6-1/4"	6.20"	6-1/4"	2"	1/2"	1"	3/16	1100	1	8	4.00
WSS7010	7"	6.585"	7"	1"	1/2"	1-1/4"	3/8	2000	1	6	6.00
WSS7012	7"	6.585"	7"	1-1/4"	1/2"	1-1/4"	3/8	2000	1	6	6.00
WSS7015	7"	6.585"	7"	1-1/2"	1/2"	1-1/4"	3/8	9000	1	6	7.00
WSS7020	7"	6.585"	7"	2"	1/2"	1-1/4"	3/8	9000	1	6	7.00
WSS7030	7"	6.585"	7"	3"	1/2"	1-1/4"	3/8	9000	1	6	7.00
WSS8010	8"	7.95"	8" - 8-1/4"	1"	1/2"	1-1/4"	3/8	6900	1	4	7.25
WSS8012	8"	7.95"	8" - 8-1/4"	1-1/4"	1/2"	1-1/4"	3/8	6900	1	4	7.25
WSS8015	8"	7.95"	8" - 8-1/4"	1-1/2"	1/2"	1-1/4"	3/8	6900	1	4	7.25
WSS8020	8"	7.95"	8" - 8-1/4"	2"	1/2"	1-1/4"	3/8	6900	1	4	7.25
WSS8030	8"	7.95"	8" - 8-1/4"	3"	1/2"	1-1/4"	1/2	12000	1	4	7.25
WSS8040	8"	7.95"	8" - 8-1/4"	4"	1/2"	1-1/4"	5/8	27000	1	4	7.25
WSS10010	10"	9.95"	10"	1"	1/2"	1-1/4"	3/8	2800	1	3	17.00
WSS10012	10"	9.95"	10"	1-1/4"	1/2"	1-1/4"	3/8	2800	1	3	17.00
WSS10015	10"	9.95"	10"	1-1/2"	1/2"	1-1/4"	3/8	2800	1	3	17.00
WSS10020	10"	9.95"	10"	2"	1/2"	1-1/4"	3/8	2800	1	3	17.00
WSS10030	10"	9.95"	10"	3"	1/2"	1-1/4"	5/8	16500	1	3	17.00
WSS10040	10"	9.95"	10"	4"	1/2"	1-1/4"	5/8	16500	1	3	17.00
WSS10060	10"	9.95"	10"	6"	1/2"	1"	3/4	34000	1	3	17.00
WSS12012	12"	11.95"	12"	1-1/4"	1/2"	1-1/4"	3/8	2800	1	2	26.00
WSS12015	12"	11.95"	12"	1-1/2"	1/2"	1-1/4"	3/8	2800	1	2	26.00
WSS12020	12"	11.95"	12"	2"	1/2"	1-1/4"	1/2	6600	1	2	26.00
WSS12030	12"	11.95"	12"	3"	1/2"	1-1/4"	5/8	12000	1	2	26.00
WSS12040	12"	11.95"	12"	4"	1/2"	1-1/4"	5/8	12000	1	2	26.00
WSS12050	12"	11.95"	12"	5"	1/2"	1-1/4"	3/4	22000	1	2	26.00
WSS12060	12"	11.95"	12"	6"	1/2"	1-1/4"	3/4	22000	1	2	26.00

\* **Note:** The 4" x 2" and 6" x 3" HD well seals have raised supports which the drop pipe fitting rests on. This keeps the fittings above the nuts and conduit bushing, making it possible to incorporate a 3/4" cable hole on the 4" x 2" and 1" cable hole on the 6" x 3" which is larger than the others on the market.