

SUMP PUMP APPLICATION

STEP 3

Prepare your choice of discharge pipe size and check valve

STEP 2

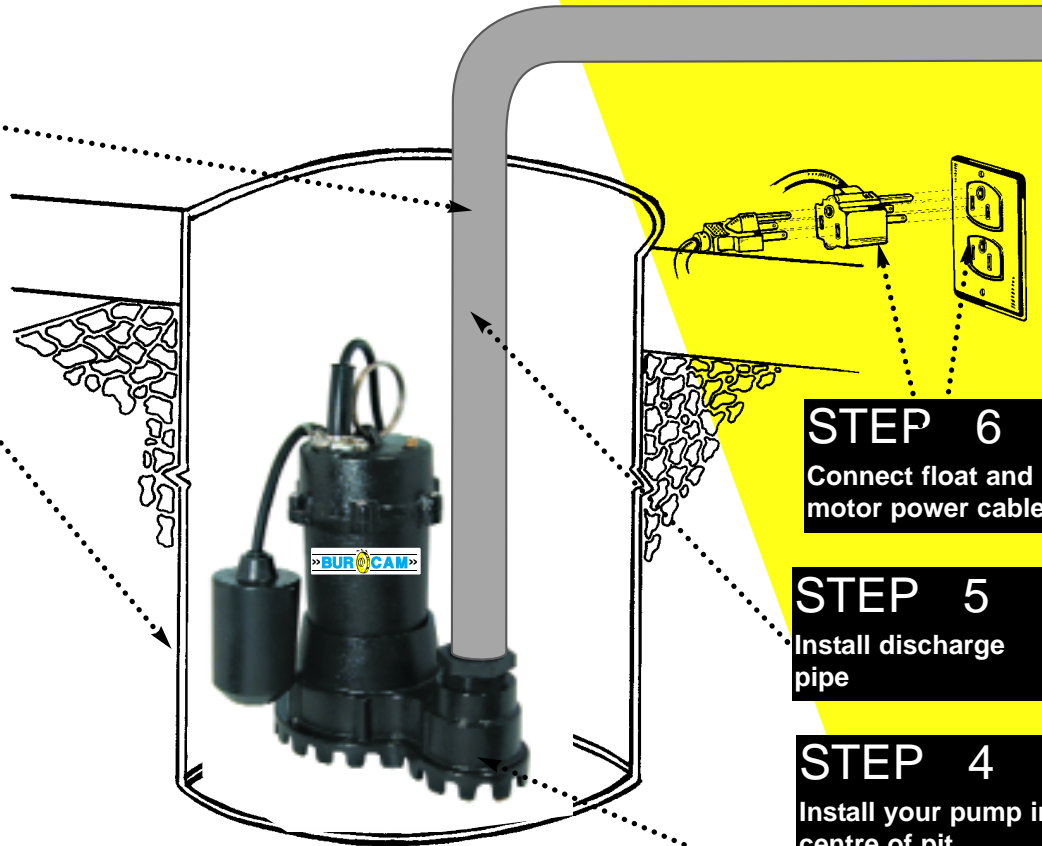
Sump pit 18" diameter X 25" depth

STEP 7

Fill the basin and test the operation

STEP 8

Review and check connections for leaks



STEP 6

Connect float and motor power cable

STEP 5

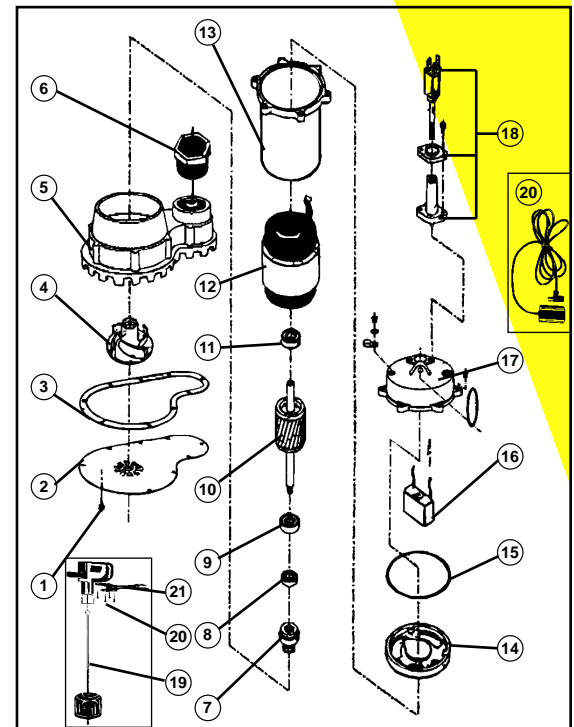
Install discharge pipe

STEP 4

Install your pump in centre of pit

REPAIR PARTS

REF.	PART	DESCRIPTION	REF.	PART	DESCRIPTION
1	310805	Screws (9)	11	350340	Upper bearing
2	310804	Base plate	12	350292	Stator (300618)
3	310803	Rubber seal	12	350272	Stator (300718)
4	310801	Impeller (300618)	13	450532	Stator casing
4	310802	Impeller (300718)	14	350286	Bearing housing
5	310800	Pump base	15	350118	Pump gasket
6	350277	Hose adaptor	16	350293	Capacitor (300618)
7	350278	Mechanical seal	16	350273	Capacitor (300718)
8	350125	Lip seal	17	310806	Upper casing
9	350340	Lower bearing	18	350294	Power cable
10	350291	Rotor (300618)	19	450446	vertical switch
10	350271	Rotor (300718)	20	450453	Mechanical switch



Repair parts may be ordered from your authorized point of sale or from
BUR-CAM PUMPS

FOR INFORMATION TEL: 514.337.4415 FAX: 514.337.4029